



Mount St. Mary's College

Telephone Directory

Chalon Campus

12001 Chalon Road
Los Angeles, California 90049-1599
310.954.4000

Doheny Campus

10 Chester Place
Los Angeles, California 90007
213.477.2500

Mount St. Mary's College

Telephone Directory

Telephone Numbers

This telephone book combines telephone numbers for both the Chalon and Doheny campuses sorted by department and by individual. Extensions that begin with 4xxx or 17xx are Chalon numbers, which has a prefix of (310), 954 – xxxx; and those that begin with a 2xxx are Doheny numbers, which has a prefix of (213) 477-xxxx. Some departments and individuals have offices on both campuses and therefore have two telephone numbers listed.

E-mail

In the alphabetical listings of some individuals, an e-mail address will appear. These were the e-mail addresses established as of press time. If you would like to send an e-mail to an individual who does not have an address listed, you may type in the first initial of their first name, then their last name followed by @msmc.la.edu. For example, the e-mail address for Mary Jones would be mjones@msmc.la.edu. If Mary Jones is a Sister, she may be smjones@msmc.la.edu. This is only a guide and some may have different formatting. Please call to verify if possible.

Office Locations

Legend: also in the alphabetical listings of individuals, you will see the campus where the individual works, followed by an office or building number. The abbreviations are as follows:

- A – Administration Building, Chalon
- B – Brady Hall, Chalon
- Bldg # - Numbered building, Doheny
- DH - Drudis Hall (Art Building), Chalon
- H - Humanities Building, Chalon

Emergency Hotline

In the event of a disaster or other emergency on either campus, call the College Hotline at (310) 954-4001 for instructions regarding school closures and other pertinent information.

To Make Corrections

Send Telephone Directory corrections to Telecommunications Department at telecom@msmc.la.edu.

For more information, visit us at www.msmc.la.edu/telecom.

PROCEDURES FOR HANDLING EMPLOYEE INJURIES:

(Includes student employees)

In an emergency call **9-1-1**.

Nursing staff from Student Health will assist with the emergency until the paramedics arrive. Please advise Security that the paramedics are coming so they provide adequate directions upon their arrival. The telephone numbers for Security and Student Health are as follows:

Main Security Gate:

Chalon Campus: Extension 4123

Doheny Campus: Extension 2502

Student Health:

Chalon Campus: Extension 4110

Doheny Campus: Extension 2685

For non-urgent medical care, please contact Human Resources, extension 4035 and a visit to our designated clinic will be arranged.

Clinic Locations:

USA Health Works (Open 24 hours) – Doheny Campus

1212 S. Flower St.

Los Angeles, CA 90015

Telephone: (213) 747-0634

Driving directions from the Doheny Campus:

North on S. Figueroa to 12th Street

East on W. 12th Street to Hope Street

East on Hope Street to parking lot entrance off Hope Street

Reiss-Woznak Medical Clinic (M-F – 7:30 a.m. – 5:30 p.m.)* - Chalon Campus

1908 Santa Monica Blvd. #5

Santa Monica, CA 90404

Telephone: (310) 828-5571

***After hours, employer should call the clinic for the on-call physician and the doctor will meet the injured employee at the clinic.**

Driving directions from the Chalon Campus:

Take Bundy down from the campus to Santa Monica Blvd.

Right on Santa Monica Blvd. to 1908 Santa Monica Blvd.

The clinic is at the corner of 19th Street and Santa Monica Blvd. Entrance off 19th Street.)

Treating the medical needs of the injured employee is the first priority. It is then essential that all necessary workers' compensation paperwork be submitted to Human Resources within 24 hours (or the next business day) by the injured employee and their supervisor. The College is subject to unnecessary fines if paperwork is not completed in a timely manner.

PROCEDURES FOR HANDLING VISITOR/STUDENT INJURIES:

In an emergency call **9-1-1**.

Nursing staff from Student Health will assist with the emergency until the paramedics arrive. Please advise Security that the paramedics are coming so they provide adequate directions upon their arrival. The telephone numbers for Security and Student Health are as follows:

Main Security Gate:

Chalon Campus: Extension 4123

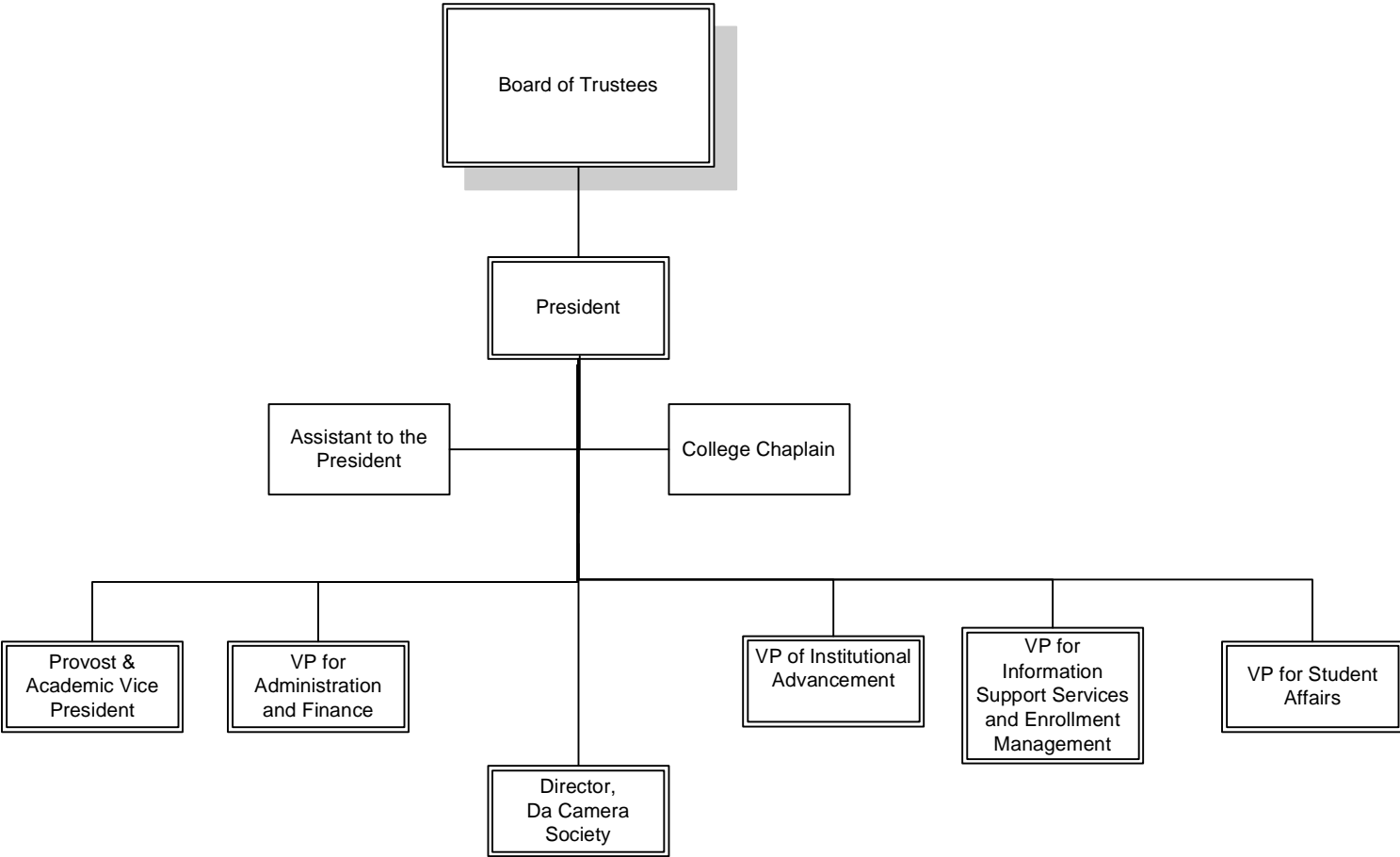
Doheny Campus: Extension 2502

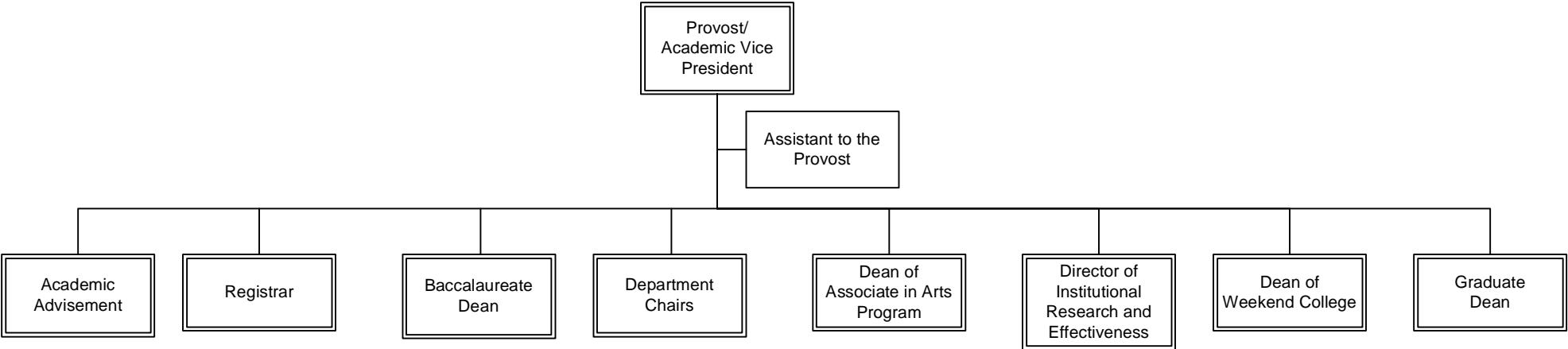
Student Health:

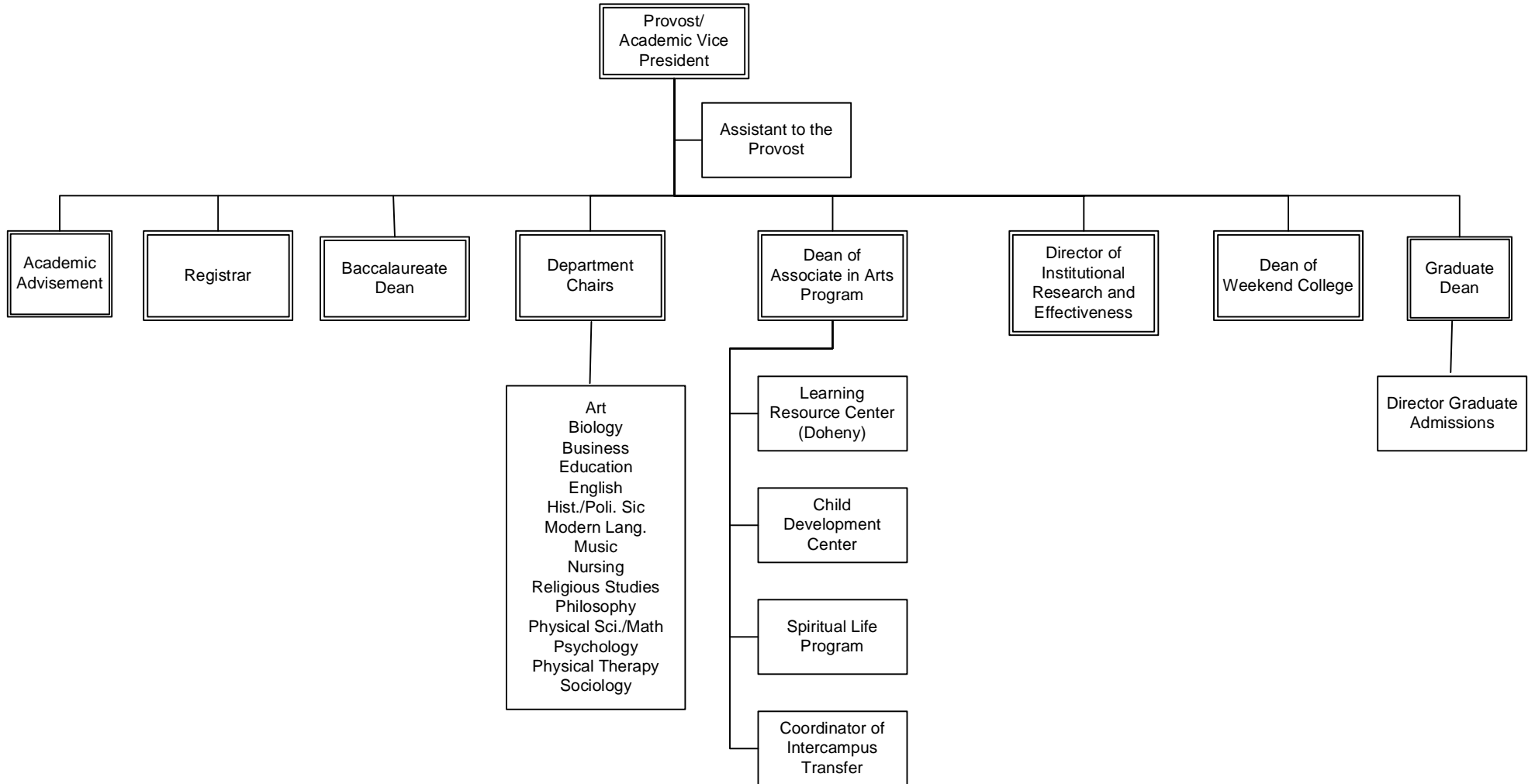
Chalon Campus: Extension 4110

Doheny Campus: Extension 2685

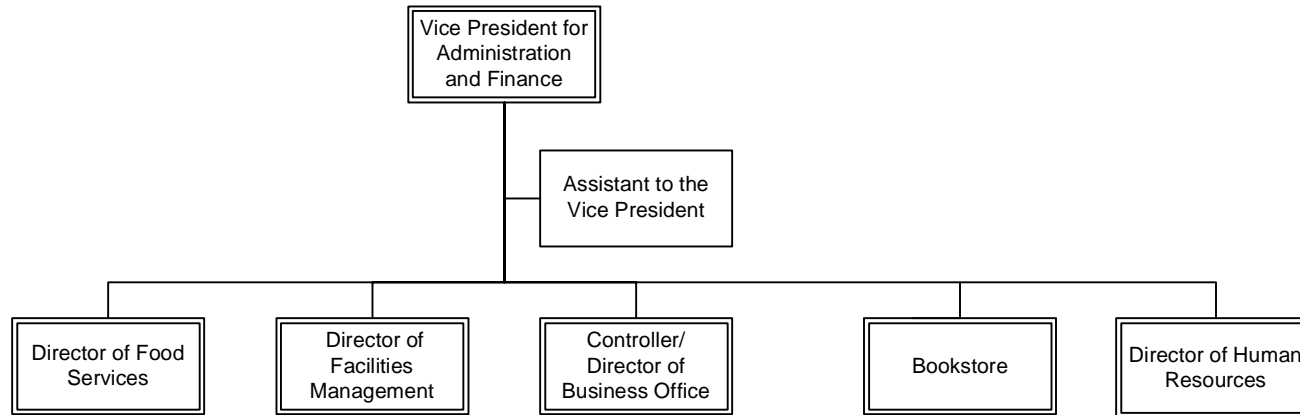
The injured person may elect to see his/her own physician in non-urgent situations. Security staff will complete an incident report within 24 hours of the occurrence. Any employee that has direct knowledge about the situation is required to assist with the preparation of the report. Security staff will communicate incidents to Carmen Fernandez, extension 4030 for administrative follow-up.



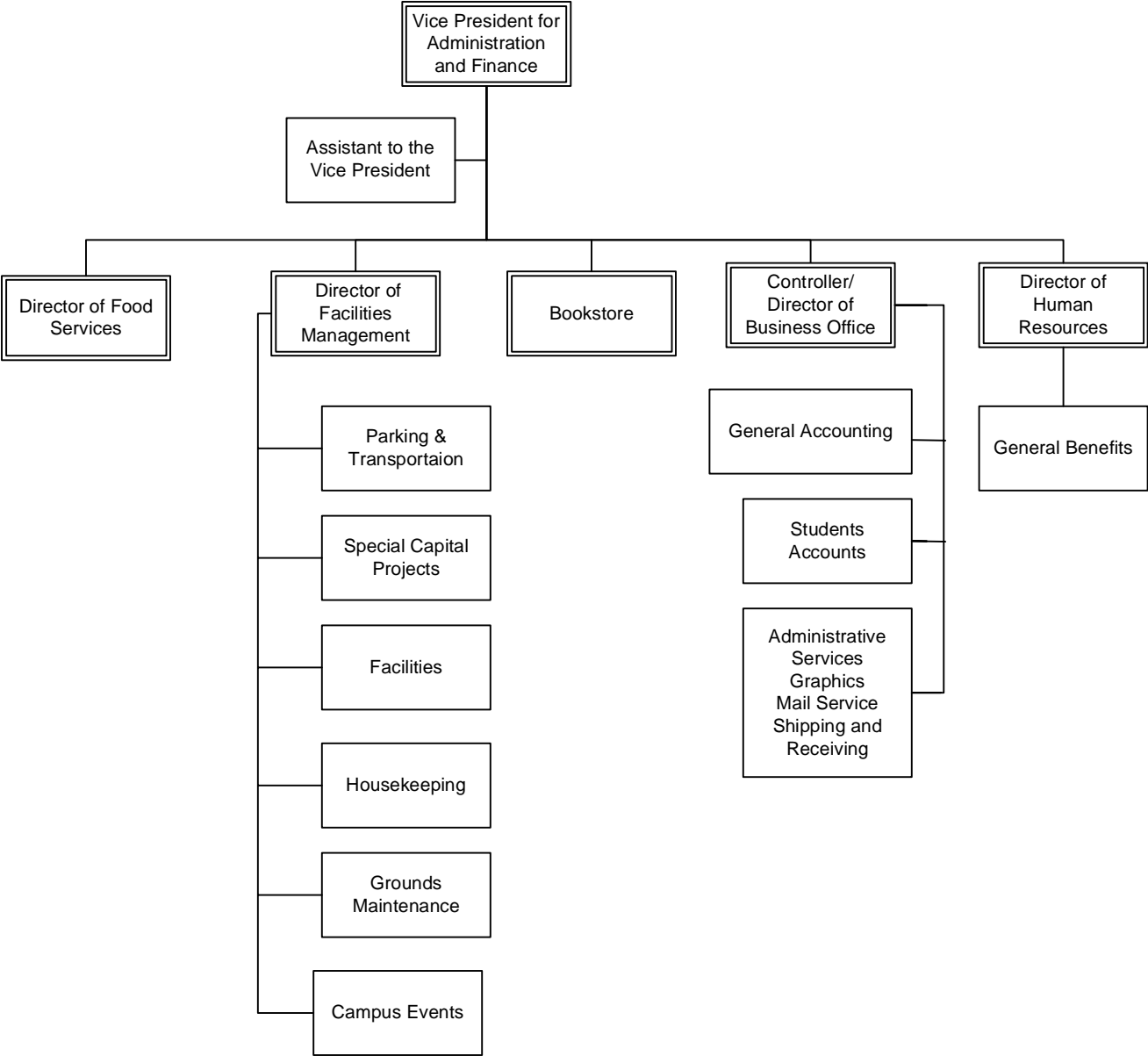


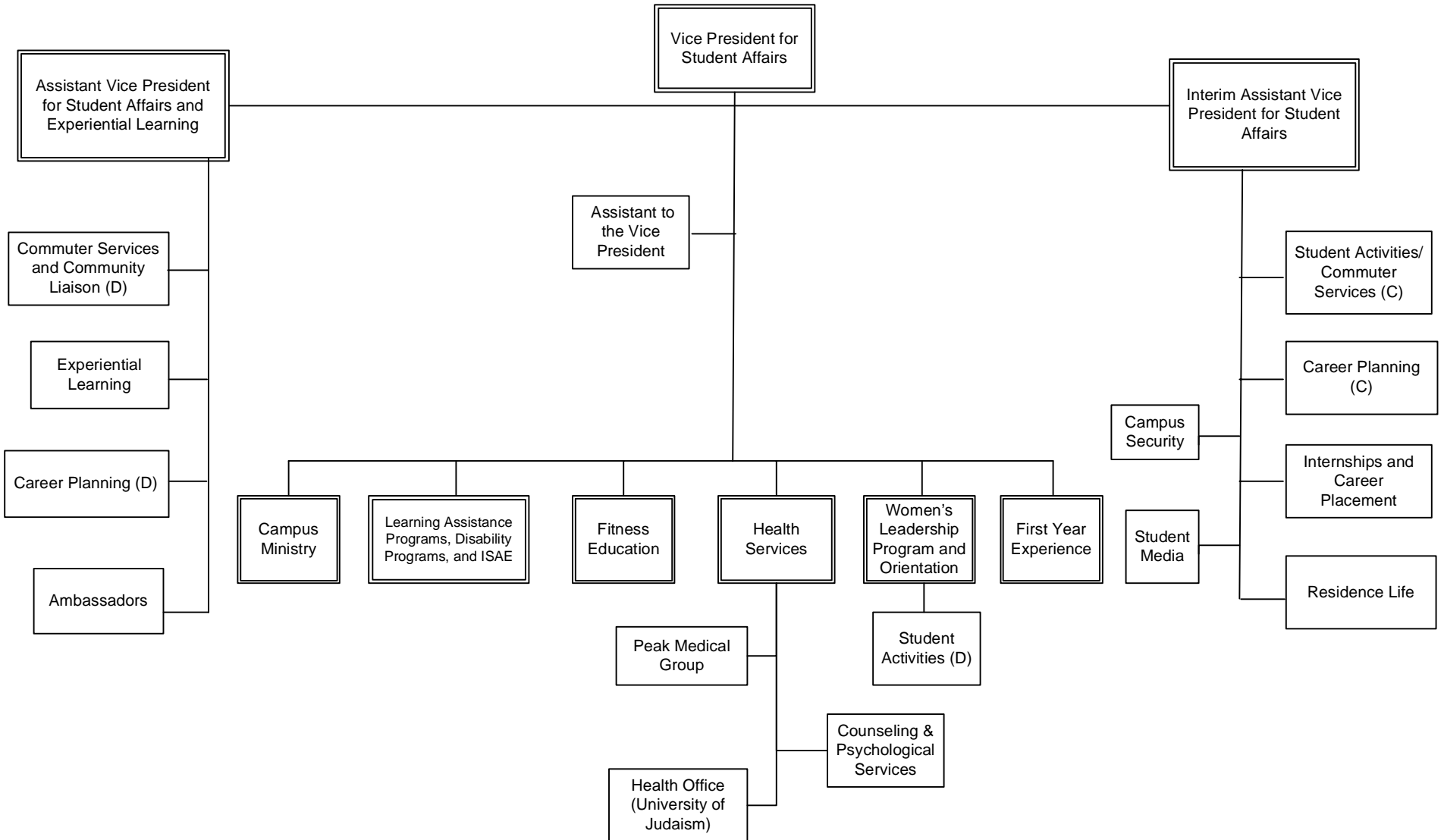


**Vice President for
Administration and Finance
Organizational Chart**

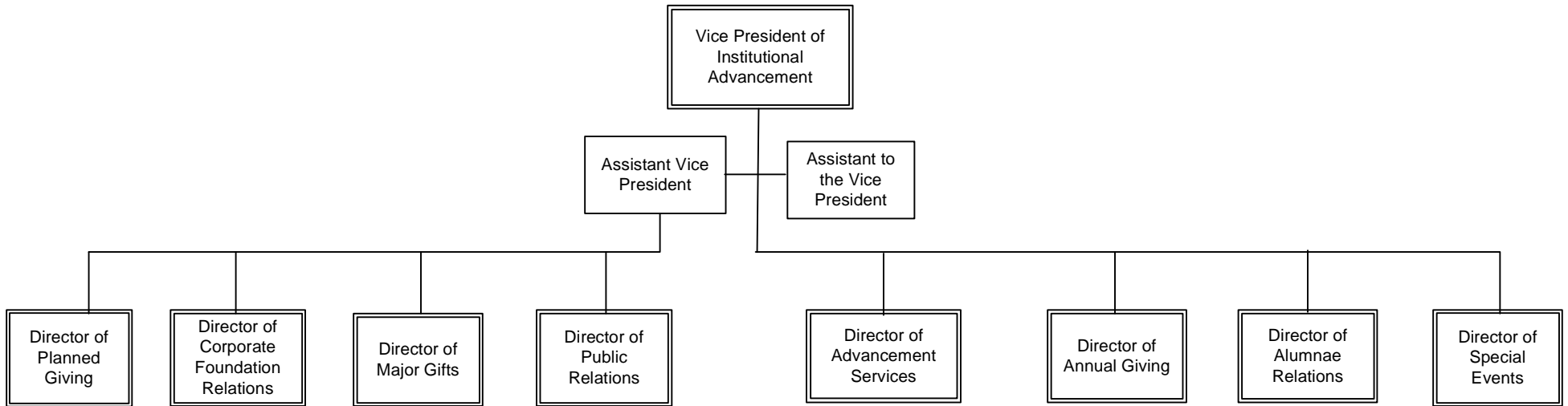


Vice President for
Administration and Finance
Organizational Chart

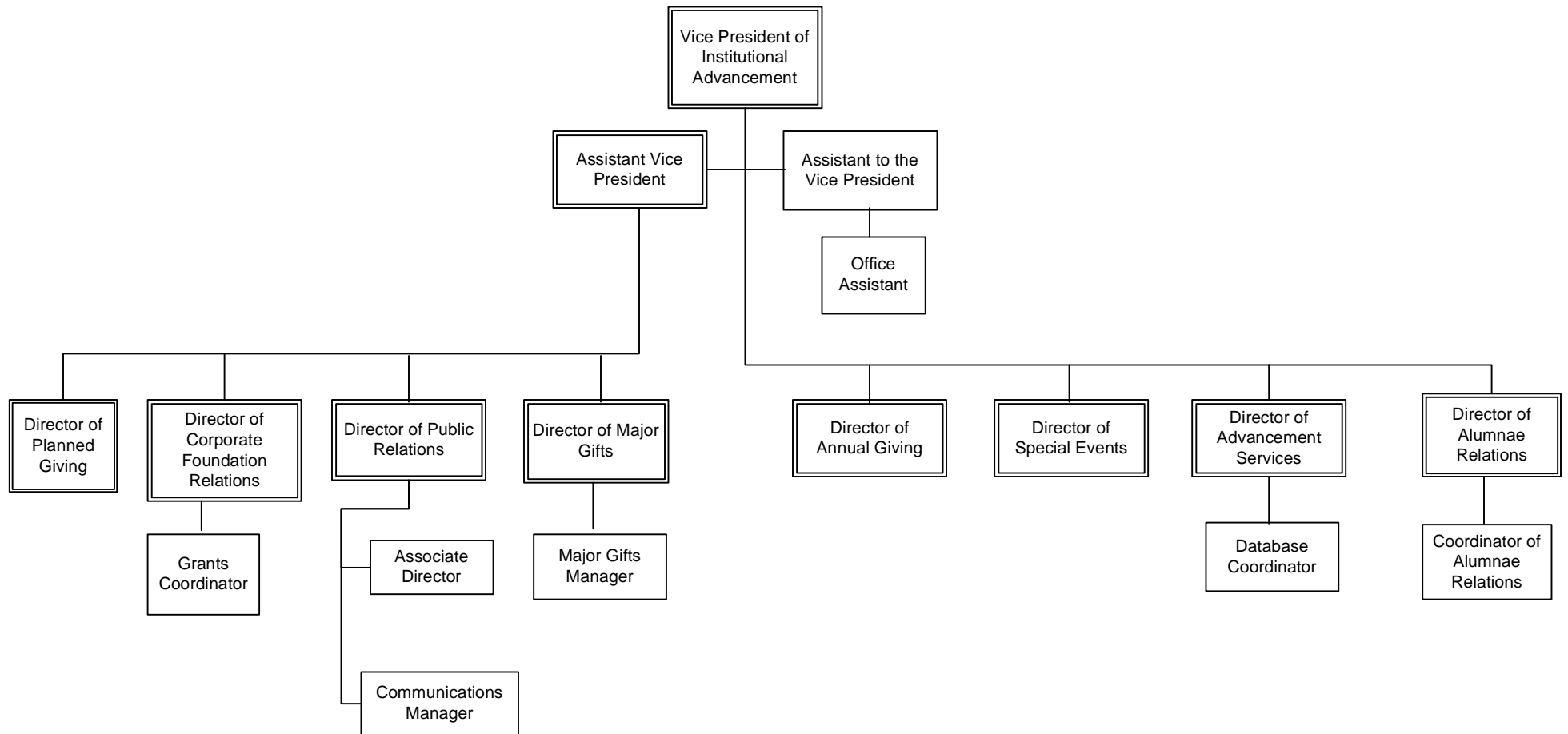




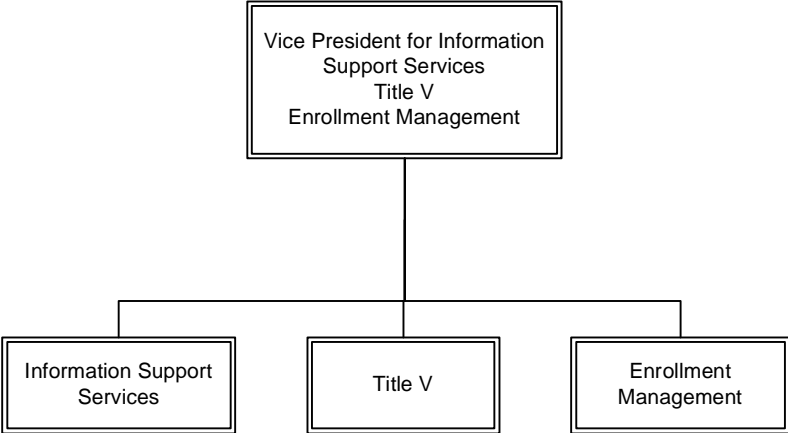
Vice President of Institutional Advancement Organizational Chart



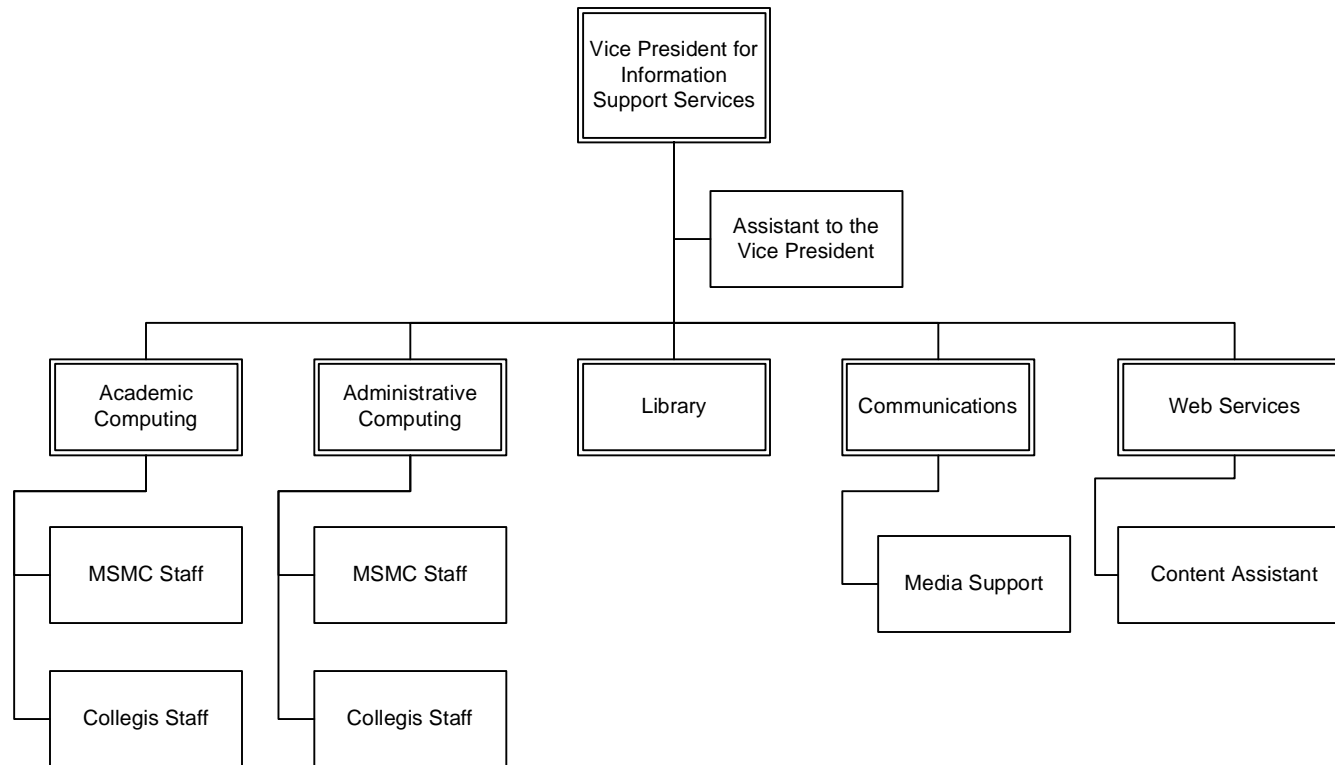
Vice President of
Institutional Advancement
Organizational Chart

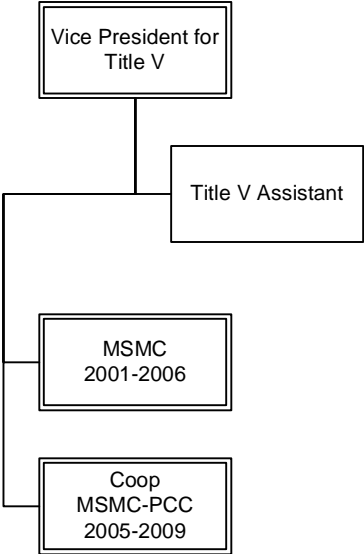


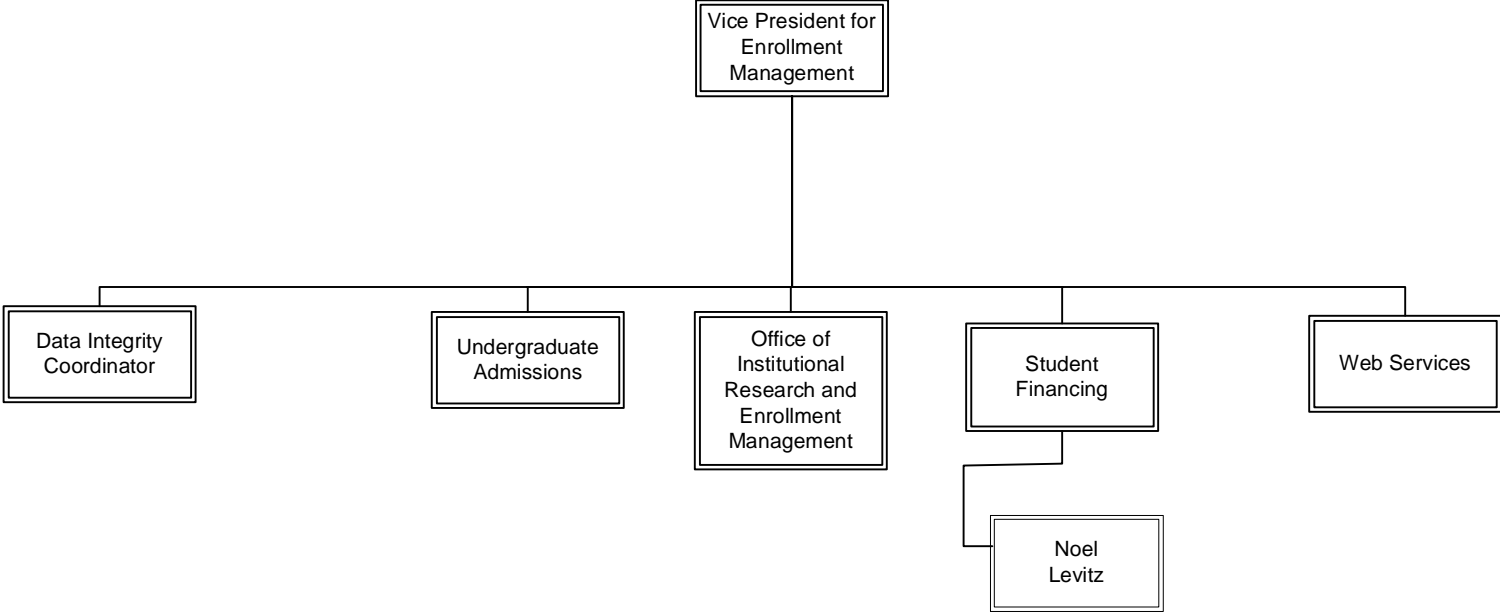
**Vice President for Information
Support Services
Organizational Chart**



Vice President for Information Support Services Organizational Chart







Phone Directory Listing By Department

Academic Advisement

Advisement, Fax		4149/2679
Advisement, Main		4070/2577
Barberie, Patricia	<i>Pre A.D.N. Advisor/A.D.N. Transcript Evaluator</i>	2943
Bonilla, Vanessa	<i>Academic Advisor</i>	4080
Cooper, Jennifer	<i>Administrative Assistant</i>	2577
Doll, Christine	<i>Admin Asst</i>	4070
Purzycki, Sr. Carol	<i>Pre Nursing Advisor</i>	4070
Quintanilla, Fatima	<i>Academic Advisor</i>	2675
Wood, Jaime	<i>Director</i>	4145
Yokoyama, James	<i>Academic Advisor</i>	4070/2577

Administration & Finance

Admin & Finance, Fax		1707
Admin & Finance, Main		4030
McAlary, Chris	<i>Vice President</i>	4030/2509
Stuckey, Kristina	<i>Assistant to Vice Pres. for Admin. and Finance</i>	4030

Admissions

Admissions, Fax		4259/2569
Admissions, Main		4250/2561
Beltran, Daniela	<i>Admission Counselor</i>	4258
Berry, Lory	<i>Office Manager</i>	2563
Berumen, Yvonne	<i>Admissions Director</i>	4250/2561
Dolliole, Jeffrey	<i>Admission Counselor</i>	2680
Fernando, Romesh	<i>Director - Online Services</i>	2936
Gonzalez, Eunice	<i>Counselor</i>	4250
Herrings, Michael	<i>Administrative Assistant</i>	4250
Johnson, Christen	<i>Admission Counselor</i>	2565
Lanier, Agasia	<i>Assist Director/Nursing Admission</i>	2558
Law, Tony	<i>Counselor</i>	2906
Magee, John	<i>Application Processor</i>	4256
Nunez, Carla	<i>Admission Counselor</i>	2566
Orellana, Jackelin	<i>Admission Counselor</i>	4253
Otterbein, Jessica	<i>Assistant Director for Operations</i>	4257
Rodriguez, Christine	<i>Nursing Counselor</i>	2902
Rouzan-Kay, Renee	<i>Associate Director</i>	4254
Roy, Casey	<i>Administrative Assistant</i>	2561
Villanueva, Marina	<i>Application Processor</i>	1732

Alumnae Relations

Alumnae Relations, Fax		2763
Alumnae Relations, Main		2767
Ford, Leilani	<i>Coordinator</i>	2767
Robles, Elizabeth	<i>Director of Alumnae Relations</i>	2769

Archives

McCargar, Vicky	<i>Archives</i>	4377
-----------------	-----------------	------

Art

Art, Gallery		4360
Art, Main		4362
Baral, Jody	<i>Department Chair</i>	4361
Loschuk, Vicky	<i>Lecturer</i>	4235
McDonnell, Susan	<i>Lecturer</i>	
Tucker, Kim	<i>Instructor</i>	

Ziperstein, Bari *Instructor* 4361

Associate in Arts Program

Associate in Arts Office, Fax		2578
Associate in Arts Office, Main		2510
Brong, Carol	<i>Assistant to the Dean</i>	2510
Disterhoft, Pat	<i>Assoc. Prog. Dean</i>	2545
InterProgram Transfer, Coordinator		2559
Stone, Jeanette	<i>Assistant Dean</i>	2559

Baccalaureate Programs

Atkinson, Rebecca	<i>Admin. Assistant</i>	4404
Barrera, Diana	<i>Transcript Evaluator</i>	2604
Smith, Lacey	<i>Dean</i>	4017

Biological Sciences

Arvand, Afsane	<i>NIH/NIGMS MARC Program Director and Associate Professor</i>	4165
Biological Sciences, Fax		4062
Biological Sciences, Main		4060
Bower, Sr. Annette		4061
Briggs, Sue	<i>Administrative Assistant</i>	4060
Chang, Julia	<i>Instructor</i>	4183/2982
Cheng, Xiaomei	<i>Associate Professor</i>	4446/2635
Chotiner, Jennifer	<i>Department Chair</i>	4202
Chu, Nathan	<i>Assistant Professor</i>	4407
Maisonet, Tiffany	<i>Laboratory Tech Coordinator</i>	4174
Ngo, Mike	<i>Lab Tech Bio/Chemistry</i>	4060
Nogaj, Luiza	<i>Assistant Professor</i>	4093
Peterson, Stacey	<i>Associate Professor</i>	4252
Vasquez, Andrea	<i>Lab Assistant</i>	4064

Bookstore

Bookstore, Main		4322/2760
Chiles, Katie	<i>Manager</i>	2760
Pena, Teresa	<i>Assistant Manager</i>	4322
Webb, Derek	<i>Manager</i>	4322

Business Administration

Alhanati, Mark	<i>Department Chair</i>	4056
Atkinson, Rebecca	<i>Admin. Assistant</i>	4150
Baca, Max	<i>Adjunct Instructor</i>	
Burkitt, David	<i>Instructor</i>	2643
Business Admin, Fax		4159/2659
Business Admin, Main		4150/2644
Calder, Carol		4150
Cheung, Jeffrey	<i>Instructor</i>	4218
French, Michelle	<i>Director</i>	4153/2689
Gist, Lance	<i>Instructor</i>	4151/ 2921 WEC
Gosselin, Keith	<i>Instructor</i>	4162
Kelly, James	<i>Instructor</i>	2686
Leese, David	<i>Professor</i>	4154
Rigone, Anne	<i>Instructor</i>	4152
Roach, Jim	<i>Lecturer</i>	
Signorovitch, Dennis	<i>Instructor</i>	4218
Thrall, Natasha	<i>Administrative Assistant</i>	2644

Phone Directory Listing By Department

Turner, Chris	<i>Adjunct Faculty</i>		Lyons, Maria	<i>Community Liason</i>	2670/2671
Whitman, Katherine	<i>Associate Professor</i>	4152/ 2689 WEC	Nguyen, Maryann	<i>Assistant</i>	2574
Business Office			Robert, Bernadette	<i>Assistant VP</i>	2570
Brewer, Marcia	<i>Accounts Receivable</i>	4040	Community Engagement & Doheny Career Services		
Business Office, Fax		4042/2546	Preschutti, Mary	<i>Graduate Assistant</i>	2688
Business Office, Main		4040/2540	Terrill, Kimberly	<i>Director of Community Engagement and Doheny Career Services</i>	2662
Castillo, Jesus		2891	Corp. & Foundation Relations		
Dull, Patrick	<i>Assist Controller</i>	2794	Choe, Mae	<i>Assistant Director</i>	2899
Flores, Luis	<i>Collections Assoc.</i>	2912	Corp. & Found., Fax		2763
Miranda, Grace	<i>Loan Coodinator</i>	2913	Corp. & Found., Main		2532
Molina, Debora	<i>Accounts Receivable</i>	2547	Niculescu, Jeremy	<i>Director</i>	2532
Reyes, Evangeline	<i>Student Accts Mgr.</i>	4047	Counseling & Psych Services		
Ruiz, Haydee	<i>Accounts Receivable Cashier</i>	2543	Abtahi, Elika	<i>Postdoctoral Fellow</i>	4114/2880
Salgado, Rosemary	<i>Collections Assoc.</i>	2917	Coun & Psych Svcs, Fax		4119/2567
Ulloa, Annette	<i>Accts Payable</i>	2916	Coun & Psych Svcs, Main		4114/2668
Campus Events			Jordan, Jennifer	<i>Doctoral Intern</i>	4114/4115
Campus Events, Fax		4339/2557	Klein, Leslie	<i>Postdoctoral Fellow</i>	4114/2681
Campus Events, Main		4330/2530	Lavinger, Dore	<i>Doctoral Intern</i>	4115/2978
Melou, Lisa	<i>Manager</i>	4330/2530	Nickerson, Kendra	<i>Assistant/Training Director</i>	2668
Velasquez, Cynthia	<i>Coordinator</i>	2632	Salem, Susan	<i>Director</i>	4112
Campus Ministry			Zapata, Summer	<i>Doctoral Intern</i>	4114/4115
Campus Ministry, Fax		4119/2699	Da Camera Society		
Campus Ministry, Main		4125/2672	Bradley, Sean		2954
Firestone, Kristin	<i>Resident Minister</i>	9721	Da Camera Society, Fax		2959
Gomez, Laura	<i>Asst. Director/Music Director</i>	4124	Da Camera Society, Main		2929
Gresser, Gail	<i>Director</i>	4126/2672	Garrison, Kelly	<i>Manager Director</i>	2950
Krause, Gaile	<i>Assistant Director</i>	2694	Herring, Sherri	<i>Assoc. Dir. of Admin & Finance</i>	2951
Skorich, Danielle	<i>Resident Music minister</i>	2672	Huntoon, Terence	<i>Production Assistant</i>	2929
Tuttle, Sarah	<i>Intern</i>	4125/2672	Krause, Carol	<i>Audience Services Manager</i>	2953
Career Services			Department of Physical Therapy		
Career Services, Fax		4149/2687	Lowe, Deborah	<i>Director and Chair</i>	2601
Career Services, Main		4410/2688	Early Childhood Education and Child Development		
Newman, Marcy	<i>Assistant Director</i>	4136	Disterhoft, Pat	<i>Director</i>	2545
Simon, Marlene	<i>Director</i>	4135	Education		
Carondelet Center			Adjunct Faculty, Education		2620
Carondelet Center, The	<i>11999 Chalon Rd.</i>	310-889-2100	Agner, Kelli-Ann	<i>Fieldwork Coordinator</i>	2988
Center for Cultural Fluency			Arengo-Yarnes, Lorenza		2620
Feldman-Abe, Julie	<i>Director Elementary Ed.</i>	2625	Bagley, Sylvia	<i>Assistant Professor</i>	2622
Child Development Center			Blanchard-Young, Aisha	<i>Adjunct Faculty</i>	2620
Anugwom, Henrietta	<i>Lead Teacher</i>	2977	Ching-Matthews, Leona	<i>Adjunct Instructor</i>	2620
Child Dev Center, Main		2977	DaCosta, Jennifer	<i>Adjunct Faculty</i>	
Galan, Wendy	<i>Director</i>	2591	Education, Fax		2629
Gonzalez, Luz	<i>Housekeeper</i>	2977	Education, Main		2620
Hernandez, Vanessa	<i>Lead Teacher</i>	2977	Fisher, Jackie	<i>Outreach Coordinator - Spring</i>	(626) 325-3372
Jones, Jody	<i>Teacher</i>	2977	Foskarino, Rose	<i>CredlAnalyst/Ad Assist</i>	2621
Lopez, Teresa	<i>Secretary</i>	2590	Goldstein, Barbara		2620
Rios, Lizbeth	<i>Teacher</i>	2977	Gordon, Robin	<i>Assistant Professor</i>	2624
Rizo, Roberto	<i>Cook</i>	2977	Herst, Jacqueline		2620
Sabado, Eugenia	<i>Asst Director/ Lead Teacher</i>	2977	Johnson, Julia	<i>Adjunct Faculty</i>	
Community Engagement			Johnston, Carol	<i>Assistant Professor</i>	2617
Community Engagement, Fax		2699	Johnstone, Brian	<i>Lecturer</i>	
Community Engagement, Main		2574			

Phone Directory Listing By Department

Lee, Clifford	<i>Adjunct Faculty</i>	2620	Garcia, Gregorio	<i>Plumber</i>	4340
Matias-Padua, Cheryl	<i>Lecturer</i>		Hunter, Jeff	<i>Maint. Crew Leader</i>	2579
Morn, Lora		2620	Lopez, Guadalupe	<i>Lead Gardener</i>	4340
Munoz, Michael	<i>Adjunct Faculty</i>	2620	Miguel, Felix	<i>Carpenter</i>	4340
Nao, Kimberly	<i>Instructor</i>		Papelian, Haig	<i>Electrician</i>	4341
Pine, Nancy	<i>Director of Bridging Cultures Program</i>	2613	Quintana, Elio	<i>Maintenance</i>	2579
Ronning, Melanie		2620	Ramirez, Manuel	<i>Gardener</i>	2579
Semple, Elaine	<i>Adjunct Faculty</i>		Rodriguez, Carlos	<i>Gardener</i>	4340
Shwartz, Michelle		2621	Romo, Raoul	<i>Gardener</i>	4340
Skinner, Timothy	<i>Adjunct Faculty</i>		Sherman, Jim	<i>Landscape Manager</i>	4342/2942
Sorensen, Karen	<i>Instructor</i>		Tell, Barbara	<i>Project Mgmt Consultant</i>	4348/2535
Taylor, Diana	<i>Director of Education Specialist Program</i>	2627	Trejos, Marcela	<i>Admin Asst</i>	4340
Tochluk, Shelly	<i>Department Chair</i>	2623	Vasquez, Isela	<i>Supervisor</i>	4333
Verceles, Jill	<i>Secretary</i>	2620	Vasquez, Onofre	<i>Maintenance Worker</i>	2579
Weiner, Elizabeth		2620	Watkins, Keith	<i>Housekeeping</i>	4333
Wilcoxon, Anne	<i>Professor</i>	2622	Wells, Matt	<i>Projects Manager</i>	310-709-9704
Windmueller, Michelle		2620	Williams, Patricia	<i>Manager</i>	4044

English

Brosamer, Matthew	<i>Assoc. Professor</i>	4240
Brueck, Katherine	<i>Professor</i>	4282
Bryson, Scott	<i>Professor</i>	4284
Contreras, Loretta	<i>Instructor</i>	4168
Drane, Aaron	<i>Instructor</i>	
English, Main		4281
Ganjavi, Shadi	<i>Instructor</i>	
Halperin, Dara	<i>Instructor</i>	
Johnson, Joan	<i>Instructor</i>	2923
Lennon, Frankie	<i>Lecturer</i>	2737
McPeck-Villatoro, Marcos	<i>Assistant Professor</i>	4241
O'Brien, George	<i>Department Chair</i>	4281
Roderick, Danielle	<i>Instructor</i>	
Ryan, Bianc	<i>Lecturer</i>	2666
Sandor, Jane	<i>Instructor</i>	
Sloan, Dolores	<i>Instructor</i>	2737
Sturgeon, Elizabeth	<i>Associate Professor</i>	2731
Tino-Sandoval, Cindy		
Tysszkiewicz, Katy	<i>Instructor</i>	
Walla, Tom	<i>Instructor</i>	2735

Enrollment Management

Kilgour, Dean	<i>Director</i>	2746
Smith, Larry	<i>VP ISS/EM</i>	4018 FAX 4014

Facilities Management

Alvarado, Emilio	<i>Gardener</i>	4340
Alvarado, Jose	<i>Gardener</i>	4340
Cehua, Edwin	<i>HVAC Maintenance</i>	4341
Cuevas, Rodrigo	<i>Electrician Assistant</i>	4340
Cureil, Victor	<i>HVAC Technician</i>	4340
Deeb, John	<i>Facilities Manager</i>	4352
Delgado, Miguel	<i>Custodial Manager</i>	4340
Fac. Mgmt., Fax		4349/2598
Fac. Mgmt., Garage		2583
Fac. Mgmt., Lobby		2579
Fac. Mgmt., Main		4340/2579
Garcia, Carlos	<i>Maint. Spvrs</i>	2583

Film & Social Justice

Ballard, Charles	<i>Instructor</i>	
Bunce, Charles	<i>Instructor</i>	4212
Chamberlain, Tad	<i>Instructor</i>	
Crow, Jonathan	<i>Instructor</i>	
Dauber, Lew	<i>Instructor</i>	
Formato, Austin	<i>Instructor</i>	
Haldeman, Pam	<i>Department Chair</i>	
Karp, Sam	<i>Instructor</i>	
Lagrimas, Michelle	<i>Instructor and Coordinator of Gerontology and Social Work</i>	
Major, Wade	<i>Lecturer</i>	
Massari, Mark	<i>Instructor</i>	
Misch, David	<i>Instructor</i>	
Murray, Laura	<i>Lecturer</i>	
Paura, Catherine	<i>Instructor</i>	
Sanders, Malcolm	<i>Instructor</i>	
Thwaites, Kelby	<i>Instructor</i>	x4305
Zavala, Val	<i>Instructor</i>	

Financial Services

Caballero, Rosa	<i>Budget Accounting Analyst</i>	2919
Romero, Gloria	<i>Controller/Budger Director</i>	2940
Shevyakova, Marina	<i>Budget Director/Accounting Analyst</i>	2919

Fitness Education

Barthel, Kara	<i>Instructor</i>	4345
Bond, Maureen	<i>Director</i>	4347
Clancy, Queala	<i>Instructor</i>	4345
Connors, Lindsay	<i>Coordinator</i>	2674
Delegall, Jewel	<i>Instructor</i>	2673
Fitness Center, Fax		4391
Fitness Center, Main		4345/2673
Gonzalez, Jennie	<i>Instructor</i>	
Moore, Kim	<i>Instructor</i>	2673
Nguyen, Alice	<i>Instructor</i>	4345
Swimming Pool, The		5799/3310
Unt, Ellen	<i>Instructor</i>	4345

Food Services

Beltran, Silvia	<i>Office Manager</i>	4312
-----------------	-----------------------	------

Phone Directory Listing By Department

Quezada, Christina	<i>Individual Giving Coordinator</i>	4205/2875	McCarthy, Marsi	<i>Office Assistant</i>	2764
Raitt, Alison	<i>Development Officer</i>		Niculescu, Jeremy	<i>Dir. Corp. & Foundation Relations</i>	2532
Wickware, Sherry	<i>Director of Individual Giving</i>	2537	Ott, Sue	<i>Dir-Development Svcs</i>	2762
Information Technology			Ruiz, Jeanne	<i>Special Assistant to the Vice President of Institutional Advancement</i>	2512
Abruzzi, Angela	<i>Application Support Analyst</i>	2696	Solano, Maria	<i>Manager</i>	2536
Castaneda, Janet	<i>Title V- Admin Sppt</i>	2728	Warfield, Karen	<i>Dir-Special Events</i>	2761
Emelle, Michelle	<i>Academic Technology Director</i>	2695	Watson, Dionna	<i>Special Events Assistant</i>	2764
Estupinian, Claudia	<i>Media Associate</i>	4381	Whitley, Leeval	<i>Database Coordinator</i>	2538
Feudi, Josh	<i>CIO</i>	4215/2971	Wickware, Sherry	<i>Director of Individual Giving</i>	2537
Hayes, Chuck		4221	ISAE		
Hernandez, Araceli	<i>Asst. Dir. of Media Services</i>	2947	Cons, Virginia	<i>Special Projects Coordinator</i>	2870
Hosterman, Kent	<i>Technical Support</i>	2729	ISAE, Fax		4139/2669
Hwang, Frank	<i>Technical Support</i>	4219	ISAE, Main		4144/2663
Jimenez, Christina	<i>Media Services Assistant</i>	2647	Lewis, Michele	<i>Director</i>	4141
Kieselhorst, Eric	<i>Dir. of Media Services</i>	4381	Martinez, Veronica	<i>Associate Director</i>	2663
Kurs, Amia		4108	Rizo, Valeria	<i>Program Coordinator</i>	4144
Lott, Chris	<i>Technical Suppt Spec</i>	2972	Villa, Lisa	<i>Counselor</i>	4138
Media Center, Bldg. 1		2647	Language & Culture		
Media Center, Library		4380/4381	Ballesteros, Nancy	<i>Lecturer</i>	4305
Moran, Luis		2973	Cullen, Stamford	<i>Instructor</i>	
Nasser, Jamal		4213	DeNeve, Carmen		
O. I. T./Help Desk, Main		4210/2970	Fine, Michele	<i>Assoc. Professor</i>	4270
O.I.T., Fax		4014/2795	Fonseca-Carranza, Maritza		
Paradee, Pam	<i>Portal Manager</i>	2653	Reguant, Montserrat	<i>Department Chair</i>	4271
PC Lab, .		3466	Sitnisky-Cole, Dr. Carolina		
Perez, Maria	<i>Media Services Assistant</i>	2647	Spikes, Courtney	<i>Adjunct Faculty</i>	
Pollard, Kimberly	<i>User Liaison</i>	2968	Learning Assistance		
Rodriguez, Sal	<i>Web Specialist Assistant</i>	2697	Aucutt, Daniel	<i>Associate Director</i>	4142
Ruckenbrod, Espie	<i>Datatel User Liaison</i>	2974	Daily, Micah	<i>Analytical Skills Faculty Tutor</i>	4144
Salandan, Francis		4400/2726	Learning Assistance Program, Main		4144
Shank, Shannon	<i>Director of Institutional Data Management</i>	2907	Lewis, Michele	<i>Director</i>	4141
Smith, Larry	<i>VP ISS/EM</i>	4018/2727 FAX 4014	Martin, Paul	<i>Professional Writing Tutor</i>	4143
Strong, Heather	<i>Media Services Assistant</i>	4380	Perez, David	<i>Writing Coordinator</i>	4147
Trautwein, Paul	<i>Web Specialist</i>	4092	Rizo, Valeria	<i>Program Coordinator</i>	4144
Inst'l Planning & Research			Learning Resource Center		
Adeva, Sunnary	<i>Manager</i>	4227	Espinosa, Andrew		
Brown, Heather	<i>Assistant VP</i>	4225/2966	Flynn, Daniel Therese	<i>Staff/SPR Faculty</i>	2682
Hoegeman, Katie			Forte, Mark	<i>Director</i>	2539
Inst'l Planning & Research, Main		4227	Franks, Gerald	<i>Science Tutor</i>	2690
Insti'l Planning & Research, Fax		4209	Hamilton, Kim		
Ramirez, Maria	<i>Systems Research Analyst</i>	2605	Jun, Christine	<i>Writing and Thesis Coordinator</i>	2690
Institutional Advancement			Learning Resource, Fax		2633
Choe, Mae	<i>Assistant Director for Corporate and Foundation Relations</i>	2899	Learning Resource, Main		2690
Chung, Jina	<i>Grants Coordinator</i>	2856	Liberal Studies		
Cubba, Stephanie	<i>Vice President</i>	2766	Flynn, Mary Evelyn	<i>Advisor</i>	4283
Ehrbar, Peggie	<i>Exec. Asst. to VP</i>	2765	Liberal Studies, Fax		2629
Hizami, Cindy	<i>Director of Planned Giving</i>	2740	Vaughan, Sr., Kieran	<i>Professor</i>	2628
Inst'l Adv, Fax		4069/2763	Library		
Inst'l Adv, Main		2764	Acevedo, Marjorie	<i>Assistant Librarian</i>	2755
Ku, Teresa	<i>Advancement Svcs Coordinator</i>	2538	Alvarado, Lorena	<i>Circulation Assistant</i>	4370
			Archives, Main		4377

Phone Directory Listing By Department

Burton, Cheryl	<i>Adjunct Instructor</i>	4230	Yoon, Hea Lan		2723
Edwards, Scott	<i>Instructor</i>	4234	Payroll		
Eichman, Terri	<i>Assistant Professor</i>	4245	Ducy, Estelle	<i>Payroll Coordinator</i>	4299
Gagliardi, Charlene	<i>Assistant Professor</i>	4164	Reinhart, Ljubica	<i>Payroll Manager</i>	4043
Herring, Gaion	<i>Adjunct Instructor</i>	4230	Zaballero, Alice (Maria Alicia)	<i>Payroll Associate</i>	4332
Holmes, Rafaela	<i>Adjunct Instructor</i>		Philosophy		
Jeter, Zsa Zsa	<i>Adjunct Instructor</i>	4230	Browder, Jim	<i>Instructor</i>	4228
Kelly, Kathleen	<i>Assistant Professor</i>	1783	Daily, Micah	<i>Adjunct Instructor</i>	4172
Lawrence, Lisa	<i>Adjunct Instructor</i>	4230	Dumont, Michele	<i>Prof/Dir-Honors Prgm</i>	4181
Mayorga, Arlyn	<i>Adjunct Instructor</i>	4230	Gardner, Thomas	<i>Adjunct Instructor</i>	
McArow, Eileen	<i>Associate Professor</i>	4232	Gonzales, Frank	<i>Lecturer</i>	2732
Melnick, Patty	<i>Assistant Professor</i>	1784	Green, Paul	<i>Assistant Professor</i>	4291/2732
Miller, Bernard		4230	Koepflin, Aimee	<i>Instructor</i>	
Moore, Sharon	<i>Instructor</i>	4247	Noe, Kenneth		
Nickerson, Marsha	<i>Assistant Professor</i>	4289	Philosophy, Fax		1728
Ontiveros, Judy	<i>Assistant Professor</i>	4236	Philosophy, Main		4290
Pryor, Maureen	<i>Adjunct Instructor</i>	4230	Reynolds, Andrea	<i>Adjunct Instructor</i>	
Rea, Abigail	<i>Adjunct Instructor</i>	4230	Stern, Gabriel	<i>Adjunct Instructor</i>	
Rea, Abigal	<i>Instructor</i>	4298	Streeter, Georgianna		
Regotti, Judy	<i>Adjunct Instructor</i>	4230	Taheri, Moosh	<i>Lecturer</i>	4228
Rowan, Joanna	<i>Instructor</i>	4236	Tan, Peter	<i>Lecturer</i>	2926
Santner, Susan	<i>Adjunct Instructor</i>	4230	Teays, Wanda	<i>Department Chair</i>	310-954-4290
Schuerger, Mickie	<i>Adjunct Instructor</i>	4230	Tregenza, Birgit	<i>Instructor</i>	
Seitz, Marie	<i>Assistant Director</i>	4244	Waters, Frank	<i>Instructor</i>	
Taylor-Lindheim, Tabitha	<i>Clinical Placement & Contract Coordinator</i>	1782	Physical Sci. & Mathematics		
Tumbarello, Anne	<i>Director</i>	4279	Cizmeciyani-Papazyan, Deniz	<i>Professor</i>	4107
Vecera, Julie Anne	<i>Adjunct Instructor</i>	4230	Deprele, Sylvine	<i>Assistant Professor</i>	4101
Walker, Shenetra	<i>Adjunct Instructor</i>	4230	Fagerland, Scot	<i>Instructor</i>	2877
Wechsler, Elizabeth	<i>Instructor</i>	4308	Helston, Joshua	<i>Instructor</i>	2932
Young, Elizabeth	<i>TBSN Coordinator</i>	4230	Jafari, Hamid	<i>Instructor</i>	4079
Zonfrillo, Fran	<i>Comm Hlth II</i>	4230	Khamou, Evelyn	<i>Instructor</i>	4101
Nursing (Masters)			Kodikara, Chandani	<i>Instructor</i>	
Acosta, Angelica	<i>Adjunct Faculty</i>	2723	Mahjoor, Parisa	<i>Instructor</i>	4101
Branchick, Vivian		2723	McDonnell, Perry	<i>Instructor</i>	4079
Bruning, Madeleine	<i>Assoc. Professor</i>	2630	Pecorelli, Travis	<i>Instructor</i>	4101
Bushart, Phyllis		2723	Roback, Nancy	<i>Instructor</i>	
Calloway, Denise	<i>Program Coordinator</i>	2724	Senter, Robert	<i>Instructor</i>	4101
Canillas-Dufau, Tori		2723	Skidmore, Lance	<i>Associate Professor</i>	4066
Carroll, Sandy		2723	Starkey, Michele	<i>Dept. Co-Chair</i>	4103
Childress, Othello		2723	Stemp, Eric	<i>Dept. Co-Chair</i>	4102
D'Antuono, Susan		2723	Williamson, Teresa	<i>Instructor</i>	4079
Dahlman, Lynette		2723	Physical Therapy		
Dyer, Terri		213-477-2723	Andersen, Michael	<i>Lecturer</i>	2600
Gima, Jean		2723	Ballentine, Jennifer	<i>Instructor</i>	2600
Guine, Sandra		2723	Bisson, Teresa	<i>Instructor</i>	2600
Luciano, May		2723	Browning, Michelle	<i>Lecturer</i>	2600
Minato, Miyo		2723	Celona, Anne	<i>Lecturer</i>	2600
Okawa, Elisha	<i>Admin. Assistant</i>	2723	Chang, Julia	<i>Professor</i>	4183/2982
Ortiz, Victoria		2723	Comee, Stephany	<i>Lecturer</i>	2600
Ossey, Shamika		2723	Cordrey, Renee	<i>Lecturer</i>	2600
Otten, Rebecca		2723	Cornell, Ben	<i>Lecturer</i>	2600
Quaye, Dr. Beverly		2723	Cowden, Temple	<i>Instructor</i>	2600
Sato, Marsha	<i>Director</i>	2980	D. P. T., Fax		2609
Schloss, Ann		2723	D. P. T., Main		2600
Whalen, Ellen		2723			
Yang, Jaemin		2723			

Phone Directory Listing By Department

Diaz, Deborah	<i>Associate Professor/Curriculum Coordinator</i>	2986	Avila, Maria	<i>Adjunct Faculty</i>	2895
Donnelly, Chantal	<i>Instructor</i>	2600	Bonnel, Scott	<i>Adjunct Instructor</i>	4104/2894
Dusick, Joshua	<i>Lecturer</i>	2600	Brogan, Paul	<i>Adjunct Faculty</i>	2658
Gabard, Donald	<i>Lecturer</i>	2600	Buenaventura, Aloha	<i>Assistant Professor</i>	2896
Graham, Vicky	<i>Lecturer</i>	2600	Burns, Rick	<i>Adjunct Faculty</i>	4157/2657
Guthrie, Julie	<i>Lecturer</i>	2600	Campbell, Venetta	<i>Adjunct Instructor</i>	2895
Harada, Nancy	<i>Lecturer</i>	2600	Cobos, Claudia	<i>Adjunct Faculty</i>	2658
Hershberg, Julie	<i>Lecturer</i>	2600	Coto, Monica	<i>Instructor</i>	4151
Horn, Laura	<i>Lecturer</i>	2600	Dunlop, Darla	<i>Clinical Training Coordinator</i>	2656
Izu, Christopher	<i>Lecturer</i>	2600	Espinoza, Evelyn	<i>Adjunct Faculty</i>	4027
Kirages, Dan	<i>Lecturer</i>	2600	Estephan, Andre	<i>Adjunct Faculty</i>	2658
Kubota, Kelley	<i>Instructor</i>	2600	Fleishman, Janet	<i>Adjunct Faculty</i>	2657
LeDoux, Cherie	<i>Lecturer</i>	2600	Giang, Michael	<i>Assistant Professor</i>	4157
Lee, Alan	<i>Associate Professor</i>	2981	Gist, Pamela	<i>Department Chair</i>	4160
Lee, William	<i>Lecturer</i>	2600	Hackett, Justin	<i>Instructor</i>	4158
Limcay, Mildred		2600	Heier, Carolyn	<i>Adjunct Faculty</i>	
Loeffler, Jodi	<i>Lecturer</i>	2600	Hobel, Joe	<i>Adjunct Instructor</i>	2895
Lopez, Gabriella	<i>Admin. Assistant</i>	2600	Iglesias, Tara	<i>Adjunct Faculty</i>	2656
Mais-Requejo, Susan	<i>Lecturer</i>	2600	Levy, Mihal	<i>Adjunct Professor</i>	4156
McNealus, Kristin	<i>Lecturer</i>	2600	Lingawi, Nura		4155
Meyer, John	<i>Lecturer</i>	2600	Lorenz, Alfred	<i>Adjunct Faculty</i>	
Morgan-Putt, Tricia	<i>Lecturer</i>	2600	Lossada, Carlos		2657
Newsam, Craig	<i>Lecturer</i>	2600	Marron, Esther	<i>Instructor</i>	4158
Ngan, Jenny	<i>Instructor</i>	2600	Michael, Susan	<i>Lecturer</i>	4156
Popovich, John	<i>Lecturer</i>	2600	Montoya, Rafael	<i>Adjunct Instructor</i>	4156
Powers, Dave	<i>Lecturer</i>	2600	Moulton, Katie		4027
Reyes, Lucia	<i>Clinical Ed. Asst.</i>	2606	Nese, Carole	<i>Lecturer</i>	2657
Rizk, Houda	<i>Lecturer</i>	2600	Olmstead, Charles	<i>Adjunct Faculty</i>	4158
Rubenstein, Lori	<i>Lecturer</i>	2600	Pomerantz, Ben	<i>Instructor</i>	2656
Saito, Stephanie	<i>Lecturer</i>	2600	Psychology, Fax		4159/2659
Sargent, Barbara	<i>Lecturer</i>	2600	Psychology, Main		4155/2655
Schultz, Adam	<i>Lecturer</i>	2600	Purpus, Deanna	<i>Assistant</i>	4160/2658
Smith, Joanne		2600	Reyes, Alejandra	<i>Adjunct Faculty</i>	2658/4027
Sueki, Derrick	<i>Lecturer</i>	2600	Rivas-Hermina, Lisette	<i>Adjunct Professor</i>	4156
Teglia, Valerie	<i>Associate Professor/Director of Clinical Education</i>	2602	Samuel, Michelle	<i>Instructor</i>	4158
Tonley, Jason	<i>Lecturer</i>	2600	Schifrin, Eileen	<i>Adjunct Instructor</i>	4027/2657
Tsai, Jackson	<i>Lecturer</i>	2600	Schott, Jennifer	<i>Adjunct Instructor</i>	
Vogel, Casey	<i>Lecturer</i>	2600	Tang, Julia	<i>Adjunct Instructor</i>	4156
Vu, Cam		2600	Tate, Cathy		2657
Wagner, Amy		2981	Thompson-Halsey, Sonya	<i>Instructor</i>	4218
Yang, Julie	<i>Instructor</i>	2600	Thrall, Natasha	<i>Administrative Assistant</i>	2655
Yue, Jennifer		2600	Travis, Greg	<i>Director of Graduate Psychology</i>	2654
			Winterbauer, Neil	<i>Instructor</i>	4104/2658
			Yee, Curtis		4151
President's Office			Public Relations		
McElaney-Johnson, Ann	<i>President</i>	4010/2525	Banks, Joanna	<i>Manager</i>	2506
President, Fax		4019	Orense, Pia	<i>Assistant Director</i>	2504
Sandoval, Stephanie	<i>Office Assistant</i>	4012	Public Relations, Fax		2544
Villegas, Lucille	<i>Assistant to the President</i>	4010	Public Relations, Main		2505
Provost			Ream, Debbie	<i>Director</i>	2505
Johnston, Sarah	<i>Assistant to the Provost</i>	4015	Registrar's Office		
Provost, Fax		4019	Antunez, Karina	<i>Office Assistant</i>	4020
Siebert, Eleanor	<i>Provost/Academic VP</i>	4015/2949	De Leon, Rocio	<i>Registrar</i>	4025
Psychology			Garcia, Alison	<i>Academic Records Specialist</i>	4023
Albert, Marcia	<i>Instructor</i>	2656	Kimball, Mishka	<i>Office Assistant</i>	2521
Atkinson, Rebecca	<i>Admin. Assistant</i>	4155			

Phone Directory Listing By Department

Moore, Guadalupe	<i>Assistant Registrar</i>	4022	Romero, Amanda	<i>Instructor</i>	
Registrar's, Fax		4029/2519	Solis, Ericka	<i>Program Asst.</i>	4499
Registrar's, Main		4020/2520			
Salazar, Maritza	<i>Academic Records Specialist</i>	2523	Spiritual Life Program (Spirituality Center)		
Sanchez, Jennifer	<i>Assistant Registrar</i>	2522	Beirne, Patricia	<i>Coordinator</i>	2645
			Bernard, Thomas		2711
			Henehan, Joan	<i>Associate Director</i>	2645
Religious Studies					
Contreras, Loretta	<i>Instructor</i>	4168	Student Affairs		
Cooper, Brigidann	<i>Program Coordinator</i>	2640/2927	Bonilla, Valerie	<i>Assistant to VP</i>	4131
Cummings, Randal	<i>Lecturer</i>	2640	Lingua, Jane	<i>Vice President</i>	4132/2571
Garcia, Guillermo	<i>Assistant Professor</i>	2641	Nguyen, Maryann	<i>Program Assistant</i>	4130
Houston, Jaye	<i>Lecturer</i>	2640	Oracle, College		4083
Jenal, Leslie	<i>Lecturer</i>	2920	Newspaper		
Kawulok, CSJ, Darlene	<i>Department Chair</i>	4166/2677	Robert, Bernadette	<i>Assistant VP</i>	4099/2571
Owens, Robin	<i>Assistant Professor</i>	2722	Student Affairs, Fax		4139/2699
Religious Studies, Fax		2649	Student Affairs, Main		4130/2570
Religious Studies, Main		2640	Wadsworth, Mari	<i>Associate VP</i>	4133/2570
Rodman, Rosamond	<i>Lecturer</i>	2722	Student Ambassadors		
Sanborn, Ruth	<i>Lecturer</i>	4067/2651	Robert, Bernadette	<i>Director</i>	4099/2571
VanDyke, Dan	<i>Lecturer</i>		Stdnt Ambssdrs, Fax		4139/2699
Wright Garry, Laurie	<i>Associate Professor</i>	4067/2717	Stdnt Ambssdrs, Main		4106/2572
Religious Studies (Graduate)					
McKay, CSJ, Sr. Mary	<i>Director of Graduate Religious Studies</i>	4167/2651	Student Employment		
			Garcia, Yuliana	<i>Coodinator</i>	4195
			Stdnt Employment, Fax		4199
			Stdnt Employment, Main	<i>Stdnt Employment</i>	4195
Residence Life					
Crow, Laura		4326/2666	Student Financing		
Cuevas, Jessica	<i>Associate Director</i>	2666	Amjadi, Laura L.	<i>Office Manager</i>	4190
Gutierrez, Sandy	<i>Admin Asst</i>	4325	Ford, Jose	<i>Assistant Director</i>	4190
Malinao, Minette	<i>Residence Life Intern</i>	2652	Gutierrez, Rosie	<i>Office Manager</i>	2564
Miyamoto, Chinako	<i>Assistant Director</i>	4327	Helguera, Yesica	<i>Counselor</i>	4190/2562
Perea, Gloria	<i>Residence Life Intern</i>	2661	Hernandez, Jaime	<i>Counselor</i>	4190
Residence Desk, Chalon		4324	Housley, La Royce	<i>Director</i>	4191/2684
Residence Life, Fax		4329/2669	Lau, Jimmy	<i>Loan Officer</i>	4190/2562
Residence Life, Main		4325/2661	Manzo, Jessica	<i>Receptionist</i>	4190
RHA Store, Chalon		4461	Powell, Bridgette	<i>Receptionist</i>	2562
Wigwam, .		3323	Stdnt Financing, Fax		4199/2549
			Stdnt Financing, Main		4190/2562
Security					
McFatrige, Michael	<i>Director</i>	4084/2995	Winter, Norman	<i>Assistant Director</i>	2581
Security, Chalon Entrance		4123	Zepeda, Dalia	<i>Counselor</i>	4190/2562
Security, Circle		4321	Student Newspaper		
Security, Doheny Entrance		2502-2501	Oracle, College		4083
			Newspaper		
Sociology					
Benveniste, Angela	<i>Instructor & Dir. of Health & Human Services AA Degree Program</i>	2739	Student Programming/Commuter Services		
Chateau, Tanyatta	<i>Instructor</i>	4368	A.S.B., Hotline		4117
Cooper, Michael			Dominguez, Ana	<i>Intern</i>	4120
Formato, Austin	<i>Instructor</i>		Lyons, Maria	<i>Director/Community Liason</i>	2670/2671
Gordon, Jim	<i>Instructor</i>	(310) 271-3784	Mullings, Faraah	<i>Director (C)</i>	4121
Harte, Sande	<i>Department Chair</i>	4365/2739	Stud Act/ Comm Srvc, Fax		4139
Kay, Joseph	<i>Instructor</i>	4368	Stud Prog/Comm Srvc, Main		4120
Kelley, Veronica	<i>Instructor</i>	4368	Technical Communications		
Martinez, Aida	<i>Program Assistant</i>	4499	Castaneda, Raul	<i>Technical Coordinator</i>	4357/2944
McMurtry, Julianne	<i>Instructor</i>		Pocasangre, Wendy	<i>Telecommunications Operations Assist.</i>	4000
Ochoa, Vanessa	<i>Instructor</i>	4401			
Phillips, Jeffrey	<i>Instructor</i>	4368	Salandan, Francis		4400/2726
Rodriguez, Magdalena	<i>Instructor</i>		Title III STEM		

Phone Directory Listing By Department

Rodriguez, Leticia *Activity Director* 4421

Title III/V Grants

Castaneda, Janet *Associate Program Manager* 2728

Smith, Larry *VP ISS/EM* 4018

Title V Postbaccalaureate Project

Chong, Jocelyn *Activity Director* 2897

Garcia, Maria *Project/Activity Assistant* 2898

Habibi, Shani *Graduate Statistics Associate* 2874

Jun, Christine *Writing Thesis Coordinator* 2873

Lee Oda, Donna *Graduate Career Advisor* 2893

Title V Undergraduate

Florez, Veronica *Studio Classroom Asst.* 4403

Graves, Mallory *Technology / Web Assistant* 4222

Harte, Sande *Director* 4402

Marquez, Diana *Administrative Assistant* 4300

Ochoa, Vanessa *iComunidad Director* 4401

Transportation

Carrillo, Francisco *Driver* 4340/4333

Floyd, Brian *Driver* 4340

Ford, Brian *Driver* 4340/4333

Pinto, Angel *Driver* 4340/4333

Reynosa, Linda 4044

Rodriguez, Taimi *Driver* 4340/4333

Transportation, Main 4340/4333

Zambrano, Eduardo *Driver* 4340/4333

Vice Presidents

Lingua, Jane *VP Student Affairs* 4132/2571

McAlary, Chris *VP Admin & Fin* 4030/2509

Smith, Larry *VP ISS/EM* 4018
FAX 4014

Weekend College

Ackerman, Andi *News & Web* 2866

Gonzalez, Patricia *Academic Advisor*

Gonzalez, Patricia *Academic Advisor* 2863

Perez, Edgar *Outreach Coordinator* 2867

Portillo, Veronica *Academic Advisor/ Assistant
Director* 2862

Rodin, Merrill *Dean* 2861

Sutterley, Peggy *Administrative Assistant* 2865

Weekend College, Fax 2869

Weekend College, Main 2866

Zaferes, Peter *Academic Advisor/ Assistant
Director* 2864

Women's Leadership Program

Israelson, Aurora *Associate Director* x4359

Kempf, Rosalyn *Director* 4350/2664

Leadership, Fax 1744/2699

Leadership, Main 4350/2664

Reyes, Emilou *Program Coordinator* 4350

Phone Directory Listing By Alphabetical Order

A.D.N., Fax	2639	Admin & Finance, Fax	1707	Alvarado, Ernesto	4333
	Bldg 5		A112	Housekeeper	C-Base
Nursing (Associate)	Doheny	Administration & Finance	Chalon	Housekeeping	Chalon
A.D.N., Main	2630	Admin & Finance, Main	4030	Alvarado, Jose	4340
	Bldg 5			Gardener	F Mgmt
Nursing (Associate)	Doheny	Administration & Finance	Chalon	Facilities Management	Chalon
A.S.B., Hotline	4117	Admissions, Fax	4259/2569	Alvarado, Lorena	4370
Student Programming/Commuter Services	Chalon		H501/Bldg 10	Circulation Assistant	library
		Admissions	Chalon	Library	Chalon
				lalvarado@msmc.la.edu	
Abigail, Rea	4230	Admissions, Main	4250/2561	Amjadi, Laura L.	4190
Adjunct Instructor	H418		H502/Bldg 10	Office Manager	H328
Nursing (Baccalaureate)	Chalon	Admissions	Chalon	Student Financing	Chalon
				lamjadi@msmc.la.edu	
Abruzzi, Angela	2696	Advisement, Fax	4149/2679	Amporful, Akosua A.	4036
Application Support Analyst	Bldg. 745		Bldg 3	Assistant Director	DH109
Information Technology	Doheny	Academic Advisement	Chalon	Human Resources	Chalon
				aamporful@msmc.la.edu	
Abtahi, Elika	4114/2880	Advisement, Main	4070/2577	Anaebere, Ann	4230
Postdoctoral Fellow			H401	Adjunct Instructor	H418
Counseling & Psych Services	Chalon	Academic Advisement	Chalon	Nursing (Baccalaureate)	Chalon
Acevedo, Marjorie	2755	Agner, Kelli-Ann	2988	Andersen, Michael	2600
Assistant Librarian	Bldg 6	Fieldwork Coordinator	Building 20	Lecturer	
Library	Doheny	Education	Doheny	Physical Therapy	Doheny
macevedo@msmc.la.edu		kagner@msmc.la.edu		mandersen@msmc.la.edu	
Ackerman, Andi	2866	Albert, Marcia	2656	Andrade, David	2588
News & Web	Bldg2	Instructor			Bldg 10.5
Weekend College	Doheny	Psychology	Doheny	Mail & Copy Center Services	Doheny
Acosta, Angelica	2723	Alhanati, Mark	4056	Anguiano, Maria	2586
Adjunct Faculty	Bldg 5	Department Chair	H210/Bldg 11	Housekeeper	C-Base
Nursing (Masters)	Doheny	Business Administration	Chalon	Housekeeping	Doheny
		malhanati@msmc.la.edu		manguiano@msmc.la.edu	
Acosta, Desiree	2853	Alumnae Relations, Fax	2763	Antoniou, Peter	
Clinical Placement Assistant	Bldg5 C114B	Alumnae Relations	Doheny	Program Coordinator	
Nursing	Doheny			Master of Business Administration Program	
Adeva, Sunnary	4227	Alumnae Relations, Main	2767	Antunez, Karina	4020
Manager	chalon			Office Assistant	
Inst'l Planning & Research	Chalon	Alumnae Relations	Doheny	Registrar's Office	Chalon
Adjunct Faculty, Education	2620	Alvarado, Emilio	4340	Anugwom, Henrietta	2977
		Gardener	F Mgmt	Lead Teacher	Bldg 17
Education	Doheny	Facilities Management	Chalon	Child Development Center	Doheny

Phone Directory Listing By Alphabetical Order

Archives, Main	4377	Atkinson, Rebecca	4404	Ballentine, Jennifer	2600
Library	Chalon	Admin. Assistant		Instructor	
		Baccalaureate Programs	Chalon	Physical Therapy	Doheny
				jballentine@msmc.la.edu	
Arengo-Yarnes, Lorenza	2620	Aucutt, Daniel	4142	Ballesteros, Nancy	4305
Education	Doheny	Associate Director	H 207	Lecturer	H 314
larengo@msmc.la.edu		Learning Assistance	Chalon	Language & Culture	Chalon
		daucutt@msmc.la.edu		nballesteros@msmc.la.edu	
Arriola, Marian	2756	Avila, Margaret	2630	Banks, Joanna	2506
Circulation Clerk	Bldg 6	Assistant Director	Bldg 5	Manager	Bldg 8
Library	Doheny	Nursing (Associate)	Doheny	Public Relations	Doheny
mariola@msmc.la.edu		mavila@msmc.la.edu		jbanks@msmc.la.edu	
Arruda, Terri	4230	Avila, Maria	2895	Barajas, Angela	4230
Clinical Instructor	Building 5, H418	Adjunct Faculty		Administrative Assistant	H421
Nursing (Baccalaureate Acc)	Chalon	Psychology	Doheny	Nursing (Baccalaureate)	Chalon
		mavila2@msmc.la.edu		abarajas@msmc.la.edu	
Art, Gallery	4360	B. S. N., Main	4230	Barajas, Laura	2685
	DH212		H417	Medical Office Manager	
Art	Chalon	Nursing (Baccalaureate)	Chalon	Health Services	Doheny
Art, Main	4362	B.S.N., Fax	4229	Baral, Jody	4361
Art	Chalon	Nursing (Baccalaureate)	Chalon	Department Chair	DH 217
				Art	Chalon
				jbaral@msmc.la.edu	
Arvand, Afsane	4165	B.S.N. Acc., Fax	2639	Barberie, Patricia	2943
NIH/NIGMS MARC	H313	Nursing (Baccalaureate Acc)	Doheny	Pre A.D.N.	
Program Director and				Advisor/A.D.N. Transcript	
Associate Professor				Evaluator	
Biological Sciences	Chalon			Academic Advisement	Doheny
Ash, Patricia	4242	B.S.N. Acc., Main	2985	Barrera, Diana	2604
Associate Professor	H523	Nursing (Baccalaureate Acc)	Doheny	Transcript Evaluator	Bldg 10 1st floor
History/Political Science	Chalon			Baccalaureate Programs	Doheny
pash@msmc.la.edu				dbarrera@msmc.la.edu	
Associate in Arts Office, Fax	2578	Baca, Max		Barron, Samuel Muniz	4333
Associate in Arts	Doheny	Adjunct Instructor		Custodian	C-Base
Program		Business Administration		Housekeeping	Chalon
				sbarron@msmc.la.edu	
Associate in Arts Office, Main	2510	Bagley, Sylvia	2622	Barthel, Kara	4345
Associate in Arts	Doheny	Assistant Professor		Instructor	
Program		Education	Doheny	Fitness Education	Chalon
		sbagley@msmc.la.edu			
Atkinson, Rebecca	4150	Baleva-Wilson, Millie	2630	Behles, Aliyya	2985
Admin. Assistant		Instructor	Bldg 5	Lecturer	
Business Administration	Chalon	Nursing (Associate)	Doheny	Nursing (Baccalaureate Acc)	Doheny
		mwilson@msmc.la.edu			
Atkinson, Rebecca	4155	Ballard, Charles		Beirne, Patricia	2645
Admin. Assistant		Instructor	Office: H310	Coordinator	Bldg. 2
Psychology	Chalon	Film & Social Justice		Spiritual Life Program	Doheny
		cballard@msmc.la.edu		(Spirituality Center)	

Phone Directory Listing By Alphabetical Order

Beltran, Daniela	4258	Bonilla, Valerie	4131	Briggs, Lekecia	4230
Admission Counselor		Assistant to VP	H200	Adjunct Instructor	H418
Admissions	Chalon	Student Affairs	Chalon	Nursing (Baccalaureate)	Chalon
dbeltran@msmc.la.edu		vlbonilla@msmc.la.edu			
Beltran, Silvia	4312	Bonilla, Vanessa	4080	Briggs, Sue	4060
Office Manager	Brady 1st Floor	Academic Advisor		Administrative Assistant	A-10
Food Services	Chalon	Academic Advisement	Chalon	Biological Sciences	Chalon
sbeltran@msmc.la.edu		vbonilla@msmc.la.edu		sbriggs@msmc.la.edu	
Benveniste, Angela	2739	Bonino, MaryAn	2700	Brogan, Paul	2658
Instructor & Dir. of Health & Human Services AA Degree Program	Bldg2 Rm212	Curator	Bldg8	Adjunct Faculty	
Sociology	Doheny	Mansion	Doheny	Psychology	Doheny
		mbonino@msmc.la.edu		pbrogan@msmc.la.edu	
Bernard, Thomas	2711	Bonnel, Scott	4104/2894	Brong, Carol	2510
Spiritual Life Program (Spirituality Center)	Doheny	Adjunct Instructor		Assistant to the Dean	Bldg 10
		Psychology	Chalon	Associate in Arts Program	Doheny
Berry, Lory	2563	Bookstore, Main	4322/2760	Brosamer, Matthew	4240
Office Manager	Bldg 10	Bookstore	Chalon	Assoc. Professor	DH-214
Admissions	Doheny			English	Chalon
lberry@msmc.la.edu				mbrosamer@msmc.la.edu	
Berumen, Yvonne	4250/2561	Borque, Dania	4230	Browder, Jim	4228
Admissions Director	H 5th Fl	Adjunct Instructor	H418	Instructor	
Admissions	Chalon	Nursing (Baccalaureate)	Chalon	Philosophy	Chalon
yberumen@msmc.la.edu				jbrowder@msmc.la.edu	
Biological Sciences, Fax	4062	Bourque, Dania	4230	Brown, Heather	4225/2966
	A10	Adjunct Instructor	H418	Assistant VP	H400/Bldg 11
Biological Sciences	Chalon	Nursing (Baccalaureate)	Chalon	Inst'l Planning & Research	Chalon
		dbourque@msmc.la.edu			
Biological Sciences, Main	4060	Boutrous, Helen	4207	Browning, Michelle	2600
	Admin Bldg	Assistant Professor	H525	Lecturer	
Biological Sciences	Chalon	History/Political Science	Chalon	Physical Therapy	Doheny
		hboutrous@msmc.la.edu		mbrowning@msmc.la.edu	
Bisson, Teresa	2600	Bower, Sr. Annette	4061	Brueck, Katherine	4282
Instructor			H-316	Professor	H413
Physical Therapy	Doheny	Biological Sciences	Chalon	English	Chalon
tbisson@msmc.la.edu		abbower@msmc.la.edu		kbrueck@msmc.la.edu	
Blanchard-Young, Aisha	2620	Bradley, Sean	2954	Bruning, Madeleine	2630
Adjunct Faculty			Bldg. 17	Assoc. Professor	
Education	Doheny	Da Camera Society	Doheny	Nursing (Masters)	Doheny
		sbradley@msmc.la.edu		mbruning@msmc.la.edu	
Blatti, Dr. Gloria	2631	Branchick, Vivian	2723	Bryson, Scott	4284
Director	Doheny			Professor	H416
Nursing (Associate)	Doheny	Nursing (Masters)	Doheny	English	Chalon
gblatti@msmc.la.edu@msmc.la.edu		vbranchick@msmc.la.edu		sbryson@msmc.la.edu	
Bond, Maureen	4347	Brewer, Marcia	4040	Buenaventura, Aloha	2896
Director	Chalon Fitness Center	Accounts Receivable	A109	Assistant Professor	
Fitness Education	Chalon	Business Office	Chalon	Psychology	Doheny
mbond@msmc.la.edu		mbrewer@msmc.la.edu		abuenaventura@msmc.la.edu	

Phone Directory Listing By Alphabetical Order

Bunce, Charles Instructor Film & Social Justice cbunce@msmc.la.edu	4212 Office: H312 Chalon	Calder, Carol Business Administration ccalder@msmc.la.edu	4150 Chalon	Carrillo, Francisco Driver Transportation fcarrillo@msmc.la.edu	4340/4333 Fac Mgmt Chalon
Burgos, Tracey Mail & Copy Center Services	4320 Chalon	Calloway, Denise Program Coordinator Nursing (Masters) Dcalloway@msmc.la.edu	2724 Doheny	Carroll, Sandy Nursing (Masters) scarroll@msmc.la.edu	2723 Doheny
Burkitt, David Instructor Business Administration dburkitt@msmc.la.edu	2643 Doheny	Campbell, Venetta Adjunct Instructor Psychology vcampbell@msmc.la.edu	2895 Doheny	Castaneda, Janet Associate Program Manager Title III/IV Grants	2728 Doheny
Burns, Rick Adjunct Faculty Psychology rburns@msmc.la.edu	4157/2657 Bldg 2 Chalon	Campus Events, Fax Campus Events	4339/2557 B3 Chalon	Castaneda, Janet Title V- Admin Sppt Information Technology jcastaneda@msmc.la.edu	2728 Bldg 1 Doheny
Burrell, Angela Instructor Nursing (Associate) aburrell@msmc.la.edu	2630 Doheny	Campus Events, Main Campus Events	4330/2530 Chalon	Castaneda, Raul Technical Coordinator Technical Communications	4357/2944 Bldg 1 / DH108 Chalon
Burton, Cheryl Adjunct Instructor Nursing (Baccalaureate) cburton@msmc.la.edu	4230 H418 Chalon	Campus Ministry, Fax Campus Ministry	4119/2699 Chalon	Castillo, Jesus Business Office jcastillo@msmc.la.edu	2891 Bldg. 10 Doheny
Bushart, Phyllis Nursing (Masters) pbushart@msmc.la.edu	2723 Doheny	Campus Ministry, Main Campus Ministry	4125/2672 H120/Bldg 7 Chalon	Castro, Reimundo Custodian Housekeeping	4333 Bldg 8.5 Chalon
Business Admin, Fax Business Administration	4159/2659 Chalon	Canillas-Dufau, Tori Nursing (Masters) tcanillasdu@msmc.la.edu	2723 Doheny	Castro, Vilma Application Processor Graduate Admission vcastro@msmc.la.edu	2575 Bldg. 10 2nd floor Doheny
Business Admin, Main Business Administration	4150/2644 Chalon	Career Services, Fax Career Services	4149/2687 H401/Bldg 3 Chalon	Catipon, Michelle Medical Office Assistant Health Services mcatipon@msmc.la.edu	4110 Humanities 1st floor Chalon
Business Office, Fax Business Office	4042/2546 Chalon	Career Services, Main Career Services	4410/2688 H401/Bldg 3 Chalon	Cehua, Edwin HVAC Maintenance Facilities Management ecehua@msmc.la.edu	4341 Chalon Chalon
Business Office, Main Business Office	4040/2540 A109/Bldg 10 Chalon	Carondelet Center, The 11999 Chalon Rd. Carondelet Center	310-889-2100 Chalon	Celona, Anne Lecturer Physical Therapy acelona@msmc.la.edu	2600 Doheny
Caballero, Rosa Budget Accounting Analyst Financial Services	2919 Doheny	Carrasco, Ricardo Tech Svcs. Clerk Library rcarrasco@msmc.la.edu	4383 Library Chalon	Chamberlain, Tad Instructor Film & Social Justice tchamberlain@msmc.la.edu	Office: H310

Phone Directory Listing By Alphabetical Order

Chang, Julia	4183/2982	Chotiner, Jennifer	4202	Cons, Virginia	2870
Professor	H324/C119	Department Chair	A10	Special Projects	Bldg7
Physical Therapy	Chalon	Biological Sciences	Chalon	Coordinator	
jchang@msmc.la.edu		jchotiner@msmc.la.edu		ISAE	Doheny
Chang, Julia	4183/2982	Chu, Nathan	4407	Contreras, Loretta	4168
Instructor		Assistant Professor	H316	Instructor	H522
Biological Sciences	Chalon	Biological Sciences	Chalon	Religious Studies	Chalon
		nchu@msmc.la.edu			
Chateau, Tanyatta	4368	Chung, Jina	2856	Contreras, Loretta	4168
Instructor	DH 213	Grants Coordinator		Instructor	H522
Sociology	Chalon	Institutional	Doheny	English	Chalon
tchateau@msmc.la.edu		Advancement		lcontreras@msmc.la.edu	
Cheng, Xiaomei	4446/2635	Cizmeciyan-Papazyan, Deniz	4107	Contreras, Maria	4333
Associate Professor	A-17B	Professor	A204B	Custodian	
Biological Sciences	Chalon	Physical Sci. & Mathematics	Chalon	Housekeeping	Chalon
xcheng@msmc.la.edu					
Cheung, Jeffrey	4218	Clancy, Queala	4345	Contreras, Nelson	2630
Instructor		Instructor		Administrative Assistant	
Business Administration	Chalon	Fitness Education	Chalon	Nursing (Associate)	Doheny
jcheung@msmc.la.edu					
Child Dev Center, Main	2977	Cobos, Claudia	2658	Cooper, Brigidann	2640/2927
	Bldg 17	Adjunct Faculty		Program Coordinator	Bldg 2
Child Development Center	Doheny	Psychology	Doheny	Religious Studies	Doheny
		ccobos@msmc.la.edu		BCooper@msmc.la.edu	
Childress, Othello	2723	Coffin, William		Cooper, Jennifer	2577
Nursing (Masters)	Doheny	Instructor	Bldg 2 Room 105	Administrative Assistant	
ochildress@msmc.la.edu		Master of Business Administration Program		Academic Advisement	Doheny
				jcooper@msmc.la.edu	
Chiles, Katie	2760	Collins, Loree	2788	Cooper, Michael	
Manager	Bldg5	Secretary	Bldg. 5 2nd Floor	Sociology	
Bookstore	Doheny	Nursing (Baccalaureate Acc)	Doheny	mcooper@msmc.la.edu	
dohenybookstore@msmc.la.edu					
Ching-Matthews, Leona	2620	Comee, Stephany	2600	Cordrey, Renee	2600
Adjunct Instructor	Bldg 20	Lecturer	Bldg 5	Lecturer	
Education	Doheny	Physical Therapy	Doheny	Physical Therapy	Doheny
		scomee@msmc.la.edu		rcordrey@msmc.la.edu	
Choe, Mae	2899	Community Engagement, Fax	2699	Cornell, Ben	2600
Assistant Director		Community Engagement	Doheny	Lecturer	Bldg 5
Corp. & Foundation Relations	Doheny			Physical Therapy	Doheny
				bcornell@msmc.la.edu	
Choe, Mae	2899	Community Engagement, Main	2574	Corp. & Found., Fax	2763
Assistant Director for Corporate and Foundation Relations	Bldg8	Community Engagement	Doheny	Corp. & Foundation Relations	Doheny
Chong, Jocelyn	2897	Connors, Lindsay	2674	Corp. & Found., Main	2532
Activity Director	Bldg10 2nd Floor	Coordinator	Doheny Fitness Center	Corp. & Foundation Relations	Bldg 8
Title V Postbaccalaureate Project	Doheny	Fitness Education	Doheny		Doheny
		lconnors@msmc.la.edu			

Phone Directory Listing By Alphabetical Order

Coto, Monica Instructor Psychology	4151 Chalon	Cubba, Stephanie Vice President Institutional Advancement	2766 Doheny	DaCosta, Jennifer Adjunct Faculty Education jdacosta@msmc.la.edu	
Coun & Psych Svcs, Fax Counseling & Psych Services	4119/2567 Chalon	Cuevas, Iris General Worker Food Services	4313 B-kitchen Chalon	Dahlman, Lynette Nursing (Masters) ldahlman@msmc.la.edu	2723 Doheny
Coun & Psych Svcs, Main Counseling & Psych Services	4114/2668 Chalon	Cuevas, Jessica Associate Director Residence Life jcuevas@msmc.la.edu	2666 Bldg 18 Doheny	Daily, Micah Adjunct Instructor Philosophy mdaily@msmc.la.edu	4172 Chalon
Cowden, Temple Instructor Physical Therapy tcowden@msmc.la.edu	2600 Doheny	Cuevas, Rodrigo Electrician Assistant Facilities Management rcuevas@msmc.la.edu	4340 F Mgmt Chalon	Daily, Micah Analytical Skills Faculty Tutor Learning Assistance	4144 H207 Chalon
Craveiro, Beverly Lecturer Music	4267 Chalon	Cullen, Stamford Instructor Language & Culture scullen@msmc.la.edu		Dauber, Lew Instructor Film & Social Justice ldauber@msmc.la.edu	Office: H310
Crawford, Jane History/Political Science jcrawford@msmc.la.edu	H 5th Fl	Cummings, Randal Lecturer Religious Studies rcummings@msmc.la.edu	2640 Doheny Doheny	Daum, Richard Cashier Food Services	2610 Doheny Dining Room Doheny
Cresencia, Allen Instructor Nursing (Associate) acresencia@msmc.la.edu	2630 Doheny	Cureil, Victor HVAC Technician Facilities Management vcureil@msmc.la.edu	4340 Doheny/Chalon Chalon	Davis-Kendrick, Maggie Clinical Instructor Nursing (Associate) mkendrick@msmc.la.edu	2630 Doheny
Crow, Jonathan Instructor Film & Social Justice jcrow@msmc.la.edu		D'Antuono, Susan Nursing (Masters) sdantuono@msmc.la.edu	2723 Bldg 5 Doheny	De Leon, Rocio Registrar Registrar's Office rdeleon@msmc.la.edu	4025 A104 Chalon
Crow, Laura Residence Life lcrow@msmc.la.edu	4326/2666 Chalon	D. P. T., Fax Physical Therapy	2609 Doheny	Deeb, John Facilities Manager Facilities Management jdeeb@msmc.la.edu	4352 F Mgmt Chalon
Crowder, Lisa Instructor Nursing (Associate) lcrowder@msmc.la.edu	2630 Bldg 5 Doheny	D. P. T., Main Physical Therapy	2600 Doheny	Delegall, Jewel Instructor Fitness Education jdelegall2@msmc.la.edu	2673 Doheny
Cruz, Jane Instructor Master of Business Administration Program		Da Camera Society, Fax Da Camera Society	2959 Bldg 17 Doheny	Delgado, Miguel Custodial Manager Facilities Management mdelgado@msmc.la.edu	4340 Chalon Chalon
Cruz, Miguel General Worker Food Services	5733 Chalon Kitchen Chalon	Da Camera Society, Main Da Camera Society	2929 Bldg 17 Doheny	Delgado, Salvador Custodian Housekeeping sdelgado@msmc.la.edu	2586 Bldg 8.5 Doheny

Phone Directory Listing By Alphabetical Order

Deli, Chalon	5733 Campus Center Chalon	Dull, Patrick	2794 Bldg 10 Doheny Assist Controller Business Office pdull@msmc.la.edu	Ehrbar, Peggie	2765 Bldg 8 Doheny Exec. Asst. to VP Institutional Advancement
DeNeve, Carmen	cdeneve@msmc.la.edu Language & Culture	Dumont, Michele	4181 H327 Chalon Prof/Dir-Honors Prgm Philosophy mdumont@msmc.la.edu	Eichman, Terri	4245 H426 Chalon Assistant Professor Nursing (Baccalaureate) teichman@msmc.la.edu
Deprele, Sylvine	4101 A209 Chalon Assistant Professor Physical Sci. & Mathematics	Dunlop, Darla	2656 Bldg 11 Doheny Clinical Training Coordinator Psychology	Emelle, Michelle	2695 Library A119 Doheny Academic Technology Director Information Technology
Diaz, Deborah	2986 Doheny Associate Professor/Curriculum Coordinator Physical Therapy	DuRea, Sr. Celia	4264 H5th Floor Chalon Clerk Music cdurea@msmc.la.edu	English, Main	4281 H429 Chalon English
Disterhoft, Pat	2545 Building 10 Doheny Assoc. Prog. Dean Associate in Arts Program	Dusick, Joshua	2600 Bldg 5 Doheny Lecturer Physical Therapy jdusick@msmc.la.edu	Escobedo, Leonor	2579 Bldg 8.5 Doheny Housekeeper Housekeeping lescobedo@msmc.la.edu
Disterhoft, Pat	2545 Doheny Director Early Childhood Education and Child Development	Dyer, Christine	2985 Bldg5 Doheny Nursing (Baccalaureate Acc)	Espinosa, Andrew	aespinosa@msmc.la.edu Learning Resource Center
Doll, Christine	4070 H401 Chalon Admin Asst Academic Advisement cdoll@msmc.la.edu	Dyer, Terri	213-477-2723 Doheny Nursing (Masters) TDyer@msmc.la.edu	Espinosa, Teresita	4266 H510 Chalon Music tespinosa@msmc.la.edu
Dolliole, Jeffrey	2680 745 Doheny Admission Counselor Admissions jdolliole@msmc.la.edu	Dymchenko, Natalie	2799 Doheny Sr. Graduate Admissions Counselor Graduate Admission	Espinoza, Evelyn	4027 H215 Chalon Adjunct Faculty Psychology eespinoza@msmc.la.edu
Dominguez, Ana	4120 H2nd Chalon Intern Student Programming/Commuter Services	Education, Fax	2629 Bldg 20 Doheny Education	Estephan, Andre	2658 Bldg 11 Doheny Adjunct Faculty Psychology
Donnelly, Chantal	2600 Bldg 5 Doheny Instructor Physical Therapy cdonnelly@msmc.la.edu	Education, Main	2620 Bldg 20 Doheny Education	Estupinian, Claudia	4381 Chalon Media Associate Information Technology
Drane, Aaron	adrane@msmc.la.edu Instructor English	Edwards, Scott	4234 Chalon Instructor Nursing (Baccalaureate) sedwards@msmc.la.edu	Ewell, Harongax	4314 Chalon Kitchen Chalon Prep Cook Food Services
Ducy, Estelle	4299 Chalon Payroll Coordinator Payroll	Egan, Joan	4372 Chalon Library Office Manager Library jegan@msmc.la.edu	Fac. Mgmt., Fax	4349/2598 F Mgmt/Bldg 8.5 Chalon Facilities Management

Phone Directory Listing By Alphabetical Order

Fac. Mgmt., Garage	2583 Bldg 8.5	Firestone, Kristin	9721 Resident Minister Bldg7	Food Services, Main	4310/2610 Brady/Bldg 11
Facilities Management	Doheny	Campus Ministry	Chalon	Food Services	Chalon
		kfirestone@msmc.la.edu			
Fac. Mgmt., Lobby	2579 Bldg 8.5	Fisher, Jackie	(626) 325-3372 Bldg 20	Ford, Brian	4340/4333
Facilities Management	Doheny	Outreach Coordinator - Spring	Chalon	Driver	Chalon
		Education		Transportation	
Fac. Mgmt., Main	4340/2579 F Mgmt/Bldg 8.5	Fitness Center, Fax	4391 Fitness Center	Ford, Jose	4190 H
Facilities Management	Chalon	Fitness Education	Chalon	Assistant Director	Chalon
				Student Financing	
				jford@msmc.la.edu	
Fagerland, Scot	2877 sfagerland	Fitness Center, Main	4345/2673 Fitness Center/Bldg 7	Ford, Leilani	2767 Bldg 8
Instructor	Doheny	Fitness Education	Chalon	Coordinator	Doheny
Physical Sci. & Mathematics				Alumnae Relations	
				lford@msmc.la.edu	
Fassnacht, Therese	4265	Fleishman, Janet	2657	Formato, Austin	
Department Chair		Adjunct Faculty		Instructor	H310
Music	Chalon	Psychology	Doheny	Sociology	
tfassnacht@msmc.la.edu		jfleishman@msmc.la.edu			
Feldman-Abe, Julie	2625 Building 20	Flores, Luis	2912 745 2nd Floor	Formato, Austin	
Director Elementary Ed.	Doheny	Collections Assoc.	Doheny	Instructor	H 310
Center for Cultural Fluency		Business Office		Film & Social Justice	
		laflores@msmc.la.edu		aformato@msmc.la.edu	
Fernandez, Carmen	4004 DH109	Florez, Veronica	4403	Forte, Mark	2539 Bldg 3
HR Coordinator	Chalon	Studio Classroom Asst.	Chalon	Director	Doheny
Human Resources		Title V Undergraduate		Learning Resource Center	
cfernandez@msmc.la.edu		vflorez@msmc.la.edu			
Fernando, Romesh	2936 Bldg 745	Floyd, Brian	4340	Foskarino, Rose	2621 Bldg 20
Director - Online Services	Doheny	Driver	Chalon	CredAnalyst/Ad Assist	Doheny
Admissions		Transportation		Education	
				rfofkarino@msmc.la.edu	
Fernando, Shiranee	2611 Bldg 11	Flynn, Daniel Therese	2682 Bldg 3	Franks, Gerald	2690 Bldg 3
Office Asst/Cashier	Doheny	Staff/SPR Faculty	Doheny	Science Tutor	Doheny
Food Services		Learning Resource Center		Learning Resource Center	
sfernando@msmc.la.edu					
Feudi, Josh	4215/2971 DH108	Flynn, Mary Evelyn	4283 H415	French, Michelle	4153/2689 H 213/Bldg 11
CIO	Chalon	Advisor	Chalon	Director	Chalon
Information Technology		Liberal Studies		Business Administration	
jfeudi@msmc.la.edu		mflynn@msmc.la.edu		mfrench@msmc.la.edu	
Fine, Michele	4270 H513	Fonseca-Carranza, Maritza		Fresquez, Terri	4385
Assoc. Professor	Chalon	Language & Culture		Cataloging Assistant	Chalon
Language & Culture		mfonseca@msmc.la.edu		Library	
mfine@msmc.la.edu				tfresquez@msmc.la.edu	
Fine, Michele	4270 H513	Food Services, Fax	4319/2608 Brady/Bldg 11	Fuentes, Margoth	4314/2610 B-kitchen/Bldg 11
Associate Professor	Chalon	Food Services	Chalon	Cashier	Chalon
History/Political Science				Food Services	
mfine@msmc.la.edu					

Phone Directory Listing By Alphabetical Order

Furgis, Kynthia Instructor Master of Business Administration Program		Gardner, Thomas Adjunct Instructor Philosophy tgardner@msmc.la.edu		Gomez, Edelmira 2610 General Worker Food Services Doheny egomez2@msmc.la.edu
Gabard, Donald 2600 Lecturer Bldg. 5 Physical Therapy Doheny dgabard@msmc.la.edu		Garrison, Kelly 2950 Manager Director Bldg 17 Da Camera Society Doheny kgarrison@msmc.la.edu		Gomez, Laura 4124 Asst. Director/Music Director H120 Campus Ministry Chalon
Gagliardi, Charlene 4164 Assistant Professor H420 Nursing (Baccalaureate) Chalon cgagliardi@msmc.la.edu		General Information, Hotline 4001 Hotline Chalon		Gonzales, Frank 2732 Lecturer #4-Rm 5 Philosophy Doheny
Galan, Wendy 2591 Director Bldg 17 Child Development Center Doheny		Geske, Teri 2921 Instructor Master of Business Administration Program Doheny		Gonzalez, Carlos 2610 Baker Doheny Dining Room Food Services Doheny
Ganjavi, Shadi Instructor English sganjavi@msmc.la.edu		Giang, Michael 4157 Assistant Professor Psychology Chalon mgiang@msmc.la.edu		Gonzalez, Edith 4314 General Worker Chalon Kitchen Food Services Chalon
Garcia, Alison 4023 Academic Records Specialist Registrar's Office Chalon	Administration Bldg. 1st Floor	Gima, Jean 2723 Nursing (Masters) Doheny jgima@msmc.la.edu		Gonzalez, Eunice 4250 Counselor Admissions Chalon
Garcia, Carlos 2583 Maint. Svprs Fac Mgmt Facilities Management Doheny cgarcia@msmc.la.edu		Gist, Lance 4151/ 2921 WEC Instructor Business Administration Chalon lgist@msmc.la.edu		Gonzalez, Jennie Instructor Fitness Education jgonzalez@msmc.la.edu
Garcia, Elena Assistant Master of Business Administration Program		Gist, Pamela 4160 Department Chair H219/Bldg. 11 Psychology Chalon pgist@msmc.la.edu		Gonzalez, Jose 4333/2586 Custodian Housekeeping Chalon
Garcia, Gregorio 4340 Plumber F Mgmt Facilities Management Chalon		Gladstone, Noah 4265 Instructor Music Chalon		Gonzalez, Lidia 2610 Lead Supervisor Doheny Dining Room Food Services Doheny
Garcia, Guillermo 2641 Assistant Professor Bldg 2 Room 106 Religious Studies Doheny ggarcia@msmc.la.edu		Godawa, kimberly Nursing (Baccalaureate Acc) Bldg 5		Gonzalez, Luz 2977 Housekeeper Bldg 17 Child Development Center Doheny
Garcia, Maria 2898 Project/Activity Assistant Bldg10 2nd Floor Title V Doheny Postbaccalaureate Project		Goldstein, Barbara 2620 Education Doheny bgoldstein@msmc.la.edu		Gonzalez, Patricia 2863 Academic Advisor Weekend College Doheny
Garcia, Yuliana 4195 Coodinator A120 Student Employment Chalon ygarcia@msmc.la.edu		Gomez, Delmy 2610 Pantry Building 11 Kitchen Food Services Doheny		Gonzalez, Patricia Academic Advisor Weekend College pgonzalez@msmc.la.edu

Phone Directory Listing By Alphabetical Order

Gordon, Jim	(310) 271-3784	Gutierrez, Rosie	2564	Harada, Nancy	2600
Instructor	DH 215	Office Manager	Bldg 10	Lecturer	
Sociology	Chalon	Student Financing	Doheny	Physical Therapy	Doheny
jgordon@msmc.la.edu		rgutierrez@msmc.la.edu		nharada@msmc.la.edu	
Gordon, Robin	2624	Gutierrez, Sandy	4325	Harte, Sande	4365/2739
Assistant Professor	Building 20	Admin Asst	B101	Department Chair	H319
Education	Doheny	Residence Life	Chalon	Sociology	Chalon
rgordon@msmc.la.edu		stgutierrez@msmc.la.edu		sharte@msmc.la.edu	
Gosselin, Keith	4162	Guzman, Jose Angel	2610	Harte, Sande	4402
Instructor	H217	Cook	Bldg 11	Director	DH108
Business Administration	Chalon	Food Services	Doheny	Title V Undergraduate	Chalon
kgosselin@msmc.la.edu				sharte@msmc.la.edu	
Graduate Admissions, Main	2800	H.R, Satellite	2589	Hayes, Chuck	4221
Graduate Admission	Doheny	Human Resources	Doheny	H 1st	Chalon
				Information Technology	
Graham, Patti	2685	H.R, Satellite Fax	2691	Hayward, Lodean	2753
RN / Student Health Coordinator		Human Resources	Doheny	Circulation Assistant	Bldg 6
Health Services	Doheny			Library	Doheny
				lhayward@msmc.la.edu	
Graham, Vicky	2600	H.R., Fax	4039	Heier, Carolyn	
Lecturer			DH109	Adjunct Faculty	
Physical Therapy	Doheny	Human Resources	Chalon	Psychology	
vgraham@msmc.la.edu				cheier@msmc.la.edu	
Graves, Mallory	4222	H.R., Main	4035	Heim, Michael	
Technology / Web Assistant	DH108		DH109	Lecturer	
Title V Undergraduate	Chalon	Human Resources	Chalon	Humanities (Masters)	
				mheim@msmc.la.edu	
Green, Paul	4291/2732	Habibi, Shani	2874	Helguera, Yesica	4190/2562
Assistant Professor	H326/Bldg 2	Graduate Statistics Associate	Bldg10 2nd Floor	Counselor	
Philosophy	Chalon			Student Financing	Chalon
pgreen@msmc.la.edu				yhelguera@msmc.la.edu	
Gresser, Gail	4126/2672	Hackett, Justin	4158	Helston, Joshua	2932
Director	H120/House 7	Instructor		Instructor	
Campus Ministry	Chalon	Psychology	Chalon	Physical Sci. & Mathematics	Doheny
ggresser@msmc.la.edu		jhackett@msmc.la.edu			
Griffin, Angie		Haldeman, Pam		Henehan, Joan	2645
Instructor		Department Chair	Office: H321	Associate Director	
Nursing (Baccalaureate Acc)		Film & Social Justice		Spiritual Life Program (Spirituality Center)	Doheny
		phaldeman@msmc.la.edu			
Guine, Sandra	2723	Halperin, Dara		Hernandez, Araceli	2947
Nursing (Masters)	Doheny	Instructor		Asst. Dir. of Media Services	
sguine@msmc.la.edu		English		Information Technology	Doheny
		dhalperin@msmc.la.edu			
Guthrie, Julie	2600	Hamilton, Kim		Hernandez, Elida	2610
Lecturer		Learning Resource Center		Pantry	Building 11 Kitchen
Physical Therapy	Doheny			Food Services	Doheny
jguthrie@msmc.la.edu		khamilton@msmc.la.edu			

Phone Directory Listing By Alphabetical Order

Hernandez, Jaime	4190	Holmes, Rafaela		Iglesias, Tara	2656
Counselor	H 317	Adjunct Instructor	H418	Adjunct Faculty	
Student Financing	Chalon	Nursing (Baccalaureate)		Psychology	Doheny
jhernandez@msmc.la.edu				tiglesias@msmc.la.edu	
Hernandez, Vanessa	2977	Hopkins, Ross		Inst'l Adv, Fax	4069/2763
Lead Teacher		Instructor			H501/Bldg 8
Child Development Center	Doheny	Master of Business Administration Program		Institutional Advancement	Chalon
Herrera, Antonia	4333	Horn, Laura	2600	Inst'l Adv, Main	2764
Housekeeper	C-Base	Lecturer	Bldg. 5		H501/Bldg 8
Housekeeping	Chalon	Physical Therapy	Doheny	Institutional Advancement	Doheny
		lhorn@msmc.la.edu			
Herring, Gaion	4230	Hosterman, Kent	2729	Inst'l Planning & Research, Main	4227
Adjunct Instructor	H418	Technical Support	Bldg 4		H 400
Nursing (Baccalaureate)	Chalon	Information Technology	Doheny	Inst'l Planning & Research	Chalon
gherring@msmc.la.edu		khosterman@msmc.la.edu			
Herring, Sherri	2951	Housekeeping, Fax	4349/2587	Inst'l Planning & Research, Fax	4209
Assoc. Dir. of Admin & Finance	Bldg 17	Housekeeping	Chalon		H 400
Da Camera Society	Doheny			Inst'l Planning & Research	Chalon
Herrings, Michael	4250	Housekeeping, Main	4333/2586	InterProgram Transfer, Coordinator	2559
Administrative Assistant		Housekeeping	Chalon		Bldg. 10
Admissions	Chalon			Associate in Arts Program	Doheny
Hershberg, Julie	2600	Housley, La Royce	4191/2684	Iriarte, Maria Lidia	4314
Lecturer	Bldg. 5	Director	H317	General Worker	
Physical Therapy	Doheny	Student Financing	Chalon	Food Services	Chalon
jhershberg@msmc.la.edu		ldodd@msmc.la.edu			
Herst, Jacqueline	2620	Houston, Jaye	2640	ISAE, Fax	4139/2669
Education	Doheny	Lecturer	Doheny	ISAE	Chalon
jherst@msmc.la.edu		Religious Studies	Doheny		
		jhouston@msmc.la.edu		ISAE, Main	4144/2663
Hesse, Fehrn	2774	Huddleston, William		ISAE	Chalon
Instructor	Bldg 5	Instructor			
Nursing (Associate)	Doheny	Master of Business Administration Program			
fhesse@msmc.la.edu				Israelson, Aurora	x4359
Hizami, Cindy	2740	Hunter, Jeff	2579	Associate Director	Leavey Commons, Ground Floor
Director of Planned Giving	Bldg 8	Maint. Crew Leader	Bldg 8.5		Chalon
Institutional Advancement	Doheny	Facilities Management	Doheny	Women's Leadership Program	
		jhunter@msmc.la.edu			
Hobel, Joe	2895	Huntoon, Terence	2929	Izu, Christopher	2600
Adjunct Instructor		Production Assistant	Bldg17	Lecturer	
Psychology	Doheny	Da Camera Society	Doheny	Physical Therapy	Doheny
jhobel@msmc.la.edu				cizu@msmc.la.edu	
Hoegeman, Katie		Hwang, Frank	4219	Jafari, Hamid	4079
Inst'l Planning & Research		Technical Support	H140	Instructor	
		Information Technology	Chalon	Physical Sci. & Mathematics	Chalon

Phone Directory Listing By Alphabetical Order

Jenal, Leslie	2920	Jones, Jody	2977	Kennett, James	2908
Lecturer	Bldg 2 Room 108	Teacher	Bldg. 17	Assistant Professor	Doheny
Religious Studies	Doheny	Child Development Center	Doheny	Nursing	Doheny
ljenal@msmc.la.edu				jkennett@msmc.la.edu	
Jeter, Zsa Zsa	4230	Jordan, Jennifer	4114/4115	Keramati, Elizabeth	
Adjunct Instructor	H418	Doctoral Intern	H-101	Lab Assistant	Bldg 5
Nursing (Baccalaureate)	Chalon	Counseling & Psych Services	Chalon	Nursing (Baccalaureate Acc)	
Jimenez, Christina	2647	Jun, Christine	2873	Kernaghan, Kelly	2603
Media Services Assistant	Bldg1	Writing Thesis Coordinator	Bldg10 2nd Floor	Application Processor	Bldg.10 Fl. 2
Information Technology	Doheny			Graduate Admission	Doheny
cjimenez@msmc.la.edu				kkernaghan@msmc.la.edu	
Johnson, Christen	2565	Jun, Christine	2690	Khamou, Evelyn	4101
Admission Counselor	Building 10	Writing and Thesis Coordinator	Bldg 3	Instructor	
Admissions	Doheny	Learning Resource Center	Doheny	Physical Sci. & Mathematics	Chalon
cjohnson@msmc.la.edu					
Johnson, Joan	2923	Karp, Sam		Kidd, Millie	4280/2667
Instructor		Instructor	Office: H310	Program Director	
English	Doheny	Film & Social Justice		Humanities (Masters)	Chalon
jjohnson@msmc.la.edu		skarp@msmc.la.edu		mkidd@msmc.la.edu	
Johnson, Julia		Kawulok, CSJ, Darlene	4166/2677	Kieselhorst, Eric	4381
Adjunct Faculty		Department Chair	H517/Bldg 2 Room 106	Dir. of Media Services	Library
Education		Religious Studies	Chalon	Information Technology	Chalon
jjohnson@msmc.la.edu		dkawulok@msmc.la.edu		ekieselhorst@msmc.la.edu	
Johnson, Monica	2752	Kay, Joseph	4368	Kilgour, Dean	2746
Assistant/Training Director	Bldg 6	Instructor	DH 213	Director	Bldg. 5
Library	Doheny	Sociology	Chalon	Enrollment Management	Doheny
		jkay@msmc.la.edu		dkilgour@msmc.la.edu	
Johnston, Carol	2617	Kelley, Veronica	4368	Kimball, Mishka	2521
Assistant Professor		Instructor		Office Assistant	
Education	Doheny	Sociology	Chalon	Registrar's Office	Doheny
cjohnston@msmc.la.edu		vkelly@msmc.la.edu			
Johnston, Sarah	4015	Kelly, James	2686	Kirages, Dan	2600
Assistant to the Provost	A104	Instructor	Bldg 11	Lecturer	Bldg 5
Provost	Chalon	Business Administration	Doheny	Physical Therapy	Doheny
sjohnston@msmc.la.edu		jkelly@msmc.la.edu		dkirages@msmc.la.edu	
Johnstone, Brian		Kelly, Kathleen	1783	Klein, Leslie	4114/2681
Lecturer		Assistant Professor	H424	Postdoctoral Fellow	
Education		Nursing (Baccalaureate)	Chalon	Counseling & Psych Services	Chalon
briajohn@msmc.la.edu		kkelly@msmc.la.edu			
Jones, Frances	2630	Kempf, Rosalyn	4350/2664	Kodikara, Chandani	
Clinical Instructor		Director	Brady/BI.7	Instructor	
Nursing (Associate)	Doheny	Women's Leadership Program	Chalon	Physical Sci. & Mathematics	
fjones@msmc.la.edu					
Jones, Helen	2630	Kendall, Peter	2644	Koeplin, Aimee	
Admin. Assistant		Career Coach		Instructor	
Nursing (Associate)	Doheny	Master of Business Administration Program	Doheny	Philosophy	
hjones@msmc.la.edu				akoeplin@msmc.la.edu	

Phone Directory Listing By Alphabetical Order

Kranz, Mary Librarian Library mkranz@msmc.la.edu	2751 Bldg 6 Doheny	Leadership, Fax Women's Leadership Program	1744/2699 Chalon	Legaspi, Marie Anne Instructor Nursing (Associate) mlegaspi@msmc.la.edu	2630 Bldg. 5 Doheny
Krause, Carol Audience Services Manager Da Camera Society	2953 Bldg 17 1/2 Doheny	Leadership, Main Women's Leadership Program	4350/2664 Chalon	Lennon, Frankie Lecturer English flennon@msmc.la.edu	2737 Bldg 4 Doheny
Krause, Gaile Assistant Director Campus Ministry gkrause@msmc.la.edu	2694 Bldg 7 Doheny	Learning Assistance Program, Main Learning Assistance	4144 H207 Chalon	Leon, Blanca Housekeeper Housekeeping	
Ku, Teresa Advancement Svcs Coordinator Institutional Advancement	2538 Doheny	Learning Resource, Fax Learning Resource Center	2633 Bldg 3 Doheny	Levitt, Catherine Instructor Master of Business Administration Program	2644 Doheny
Kubota, Kelley Instructor Physical Therapy kkubota@msmc.la.edu	2600 Doheny	Learning Resource, Main Learning Resource Center	2690 Bldg 3 Doheny	Levy, Darlene Instructor Nursing (Associate) dlevy@msmc.la.edu	2630 Bldg 5 Doheny
Kurs, Amia Information Technology akurs@msmc.la.edu	4108 Chalon	LeDoux, Cherie Lecturer Physical Therapy cledoux@msmc.la.edu	2600 Bldg. 5 Doheny	Levy, Mihal Adjunct Professor Psychology mlevy@msmc.la.edu	4156 H212 Chalon
Lagrimas, Michelle Instructor and Coordinator of Gerontology and Social Work	Office: H320	Lee, Alan Associate Professor Physical Therapy alee@msmc.la.edu	2981 C-118 Doheny	Lewis, Michele Director ISAE mlewis@msmc.la.edu	4141 H207 Chalon
Lanier, Agasia Assist Director/Nursing Admission Admissions	2558 Bldg. 10 2nd floor Doheny	Lee, Alice Circulation Coord Library alee@msmc.la.edu	4373 Library Chalon	Lewis, Michele Director Learning Assistance mlewis@msmc.la.edu	4141 H207 Chalon
Lau, Jimmy Loan Officer Student Financing jlau@msmc.la.edu	4190/2562 bldg 10 Chalon	Lee, Clifford Adjunct Faculty Education clee@msmc.la.edu	2620 Doheny	Liberal Studies, Fax Liberal Studies	2629 Doheny
Lavering, Dore Doctoral Intern Counseling & Psych Services	4115/2978 Chalon	Lee, William Lecturer Physical Therapy wlee@msmc.la.edu	2600 Doheny	Library, Fax Library	4379/2759 COE Chalon
Law, Tony Counselor Admissions tlaw@msmc.la.edu	2906 Bldg 10 2nd Fl Doheny	Lee Oda, Donna Graduate Career Advisor Title V Postbaccalaureate Project	2893 Bldg10 2nd Floor Doheny	Library, Main Library	4370/2750 COE/Bldg 6 Chalon
Lawrence, Lisa Adjunct Instructor Nursing (Baccalaureate)	4230 H418 Chalon	Leese, David Professor Business Administration dleese@msmc.la.edu	4154 H211 Chalon	Limcay, Mildred Physical Therapy mlimcay@msmc.la.edu	2600 Doheny

Phone Directory Listing By Alphabetical Order

Lingawi, Nura	4155	Lott, Chris	2972	Major, Wade	
Psychology	Chalon	Technical Suppt Spec	Library	Lecturer	Office: H310
nlingawi@msmc.la.edu		Information Technology	Doheny	Film & Social Justice	
		clott@msmc.la.edu		wmajor@msmc.la.edu	
Lingua, Jane	4132/2571	Lowe, Deborah	2601	Malinao, Minette	2652
Vice President	H200/Bldg. 7	Director and Chair	Bldg 5-C124	Residence Life Intern	Hannon 123
Student Affairs	Chalon	Department of Physical	Doheny	Residence Life	Doheny
jlingua@msmc.la.edu		Therapy		mmalinao@msmc.la.edu	
Lingua, Jane	4132/2571	Luciano, May	2723	Mansion Tours, Main	2962
VP Student Affairs	H200	Nursing (Masters)	Doheny	Mansion	Building 8
Vice Presidents	Chalon	mluciano@msmc.la.edu			Doheny
jlingua@msmc.la.edu					
Loeffler, Jodi	2600	Lusk, Susan	4037	Manzo, Jessica	4190
Lecturer		Director	DH 109	Receptionist	
Physical Therapy	Doheny	Human Resources	Chalon	Student Financing	Chalon
jloeffler@msmc.la.edu		slusk@msmc.la.edu		jmanzo@msmc.la.edu	
Lopez, Gabriella	2600	Lyons, Maria	2670/2671	Marquez, Diana	4300
Admin. Assistant	Bldg 5	Community Liason		Administrative Assistant	DH108
Physical Therapy	Doheny	Community Engagement	Doheny	Title V Undergraduate	Chalon
glopez@msmc.la.edu		mlyons@msmc.la.edu		dmarquez@msmc.la.edu	
Lopez, Guadalupe	4340	Lyons, Maria	2670/2671	Marron, Esther	4158
Lead Gardener	F Mgmt	Director/Community	Bldg 7	Instructor	
Facilities Management	Chalon	Liason		Psychology	Chalon
glopez2@msmc.la.edu				emarron@msmc.la.edu	
Lopez, Teresa	2590	Magee, John	4256	Martin, Paul	4143
Secretary	Bldg 17	Application Processor	H-502	Professional Writing	H207
Child Development	Doheny	Admissions	Chalon	Tutor	
Center		jmagee@msmc.la.edu		Learning Assistance	Chalon
Lopez-Garcia, Israel	4314	Mahjoor, Parisa	4101	Martinez, Aida	4499
Pantry	Chalon Kitchen	Instructor	A209	Program Assistant	DH 215
Food Services	Chalon	Physical Sci. &	Chalon	Sociology	Chalon
		Mathematics		aidamart@msmc.la.edu	
Lorenz, Alfred		Mail & Copy Center	4438/2554	Martinez, Carlos	4314
Adjunct Faculty		Services, Fax		Supervisor	Chalon Dining Room
Psychology		Mail & Copy Center	Chalon	Food Services	Chalon
		Services		cmartinez@msmc.la.edu	
Loschuk, Vicky	4235	Mail & Copy Center	4320/2594	Martinez, Raul (Isidor)	4314
Lecturer	DH215	Services, Main		General Worker	Campus Center
Art	Chalon	Mail & Copy Center	Chalon	Food Services	Chalon
vloschuck@msmc.la.edu		Services			
Lossada, Carlos	2657	Mais-Requejo, Susan	2600	Martinez, Veronica	2663
Psychology	Doheny	Lecturer		Associate Director	Bldg7
		Physical Therapy	Doheny	ISAE	Doheny
		smais@msmc.la.edu		mvmartinez@msmc.la.edu	
Lost and Found, Main	4000/2560	Maisonet, Tiffany	4174	Martinez, Victor	4314
	Admin Bld/ Bldg 10	Laboratory Tech	A-16B	PM Supervisor	B-kitchen
Lost and Found	Chalon	Coordinator		Food Services	Chalon
		Biological Sciences	Chalon	vmartinez@msmc.la.edu	

Phone Directory Listing By Alphabetical Order

Massari, Mark Instructor Film & Social Justice mmassari@msmc.la.edu	Office: H310	McFatrige, Michael Director Security mmcfatrige@msmc.la.edu	4084/2995 Chalon	Mendez, Conrado General Worker Food Services	2610 Building 11 Kitchen Doheny
Matias-Padua, Cheryl Lecturer Education cpadua@msmc.la.edu		McGrath, Marie Instructor Nursing (Associate)	2901 Bldg 5 Doheny	Meyer, John Lecturer Physical Therapy jmeyer@msmc.la.edu	2600 Doheny
Mayorga, Arlyn Adjunct Instructor Nursing (Baccalaureate)	4230 H418 Chalon	McKay, CSJ, Sr. Mary Director of Graduate Religious Studies Religious Studies (Graduate)	4167/2651 Chalon	Michael, Susan Lecturer Psychology smichael@msmc.la.edu	4156 Chalon
McAlary, Chris VP Admin & Fin Vice Presidents cmcalary@msmc.la.edu	4030/2509 A112 Chalon	McMurtry, Julianne Instructor Sociology jmcmurtry@msmc.la.edu	Office: H328	Miguel, Felix Carpenter Facilities Management	4340 Fac Mgmt Chalon
McAlary, Chris Vice President Administration & Finance cmcalary@msmc.la.edu	4030/2509 A112 Chalon	McNealus, Kristin Lecturer Physical Therapy kmcnealus@msmc.la.edu	2600 Bldg. 5 Doheny	Miller, Bernard Nursing (Baccalaureate)	4230 Chalon
McArow, Eileen Associate Professor Nursing (Baccalaureate) emcarow@msmc.la.edu	4232 H417 Chalon	McPeek-Villatoro, Marcos Assistant Professor English	4241 H414 Chalon	Millsap, Patrick Instructor Master of Business Administration Program	
McCargar, Vicky Archives Archives vmccargar@msmc.la.edu	4377 Library Chalon	Media Center, Bldg. 1 Information Technology	2647 Doheny	Minato, Miyo Nursing (Masters) mminato@msmc.la.edu	2723 Doheny
McCarthy, Marsi Office Assistant Institutional Advancement	2764 Doheny	Media Center, Library Information Technology	4380/4381 Coe Library Chalon	Miranda, Grace Loan Coordinator Business Office gmiranda@msmc.la.edu	2913 Bldg 10 Doheny
McDonald, Joycelyn Instructor Nursing (Associate)	2630 Bldg 5 Doheny	Mehrez, Joseph Access Services Librarian Library	4376 Library Chalon	Misch, David Instructor Film & Social Justice dmisch@msmc.la.edu	Office: H310
McDonnell, Perry Instructor Physical Sci. & Mathematics	4079 Chalon	Mejia, Alfonso Relief Cook Food Services	4314 B-kitchen Chalon	Miyamoto, Chinako Assistant Director Residence Life cmiyamoto@msmc.la.edu	4327 B 101 Chalon
McDonnell, Susan Lecturer Art smcdonnell@msmc.la.edu		Melnick, Patty Assistant Professor Nursing (Baccalaureate) pmelnick@msmc.la.edu	1784 H427 Chalon	Molina, Debora Accounts Receivable Business Office dmolina@msmc.la.edu	2547 Bldg 745 Doheny
McElaney-Johnson, Ann President President's Office	4010/2525 Chalon	Melou, Lisa Manager Campus Events lmelou@msmc.la.edu	4330/2530 Brady/10 1/2 Chalon	Molle, Mary Fletcher Jones Endowed Chair for Nursing Nursing	2642 Doheny

Phone Directory Listing By Alphabetical Order

Montoya, Rafael	4156	Murray, Laura		Nguyen, Alice	4345
Adjunct Instructor		Lecturer	Office: H328	Instructor	
Psychology	Chalon	Film & Social Justice		Fitness Education	Chalon
		lmurray@msmc.la.edu		anguyen@msmc.la.edu	
Moody, Linda	2560	Music, Fax	1709	Nguyen, Maryann	4130
Graduate Dean	Bldg 10		H5 Music Lab	Program Assistant	
Graduate Dean	Doheny	Music	Chalon	Student Affairs	Chalon
lmoody@msmc.la.edu				mnguyen@msmc.la.edu	
Moon, Kathleen	4079	Music, Main	4265	Nguyen, Maryann	2574
Music	Chalon	Music	Chalon	Assistant	
kmoon@msmc.la.edu				Community Engagement	Doheny
				mnguyen@msmc.la.edu	
Moore, Guadalupe	4022	Nao, Kimberly		Nickerson, Kendra	2668
Assistant Registrar	A 104	Instructor		Assistant/Training	Building 7
Registrar's Office	Chalon	Education		Director	
gmoore@msmc.la.edu		knao@msmc.la.edu		Counseling & Psych	Doheny
				Services	
Moore, Kim	2673	Naranjo, Ivonne	2630	Nickerson, Marsha	4289
Instructor	Doheny	Secretary		Assistant Professor	H422
Fitness Education	Doheny	Nursing (Associate)	Doheny	Nursing (Baccalaureate)	Chalon
kmoore@msmc.la.edu		inranjo@msmc.la.edu		mnickerson@msmc.la.edu	
Moore, Sharon	4247	Nasser, Jamal	4213	Niculescu, Jeremy	2532
Instructor	H426		Chalon	Dir. Corp. & Foundation	Bldg 8
Nursing (Baccalaureate)	Chalon	Information Technology	Chalon	Relations	
smoore1@msmc.la.edu		jnasser@msmc.la.edu		Institutional	Doheny
				Advancement	
Moran, Luis	2973	Neblett, James	2921	Niculescu, Jeremy	2532
	Bldg 1	Instructor		Director	
Information Technology	Doheny	Master of Business	Doheny	Corp. & Foundation	Doheny
lmoran@msmc.la.edu		Administration Program		Relations	
Morgan-Putt, Tricia	2600	Nese, Carole	2657	Noe, Kenneth	
Lecturer		Lecturer		Philosophy	
Physical Therapy	Doheny	Psychology	Doheny		
tmorgan@msmc.la.edu		cnese@msmc.la.edu			
Morn, Lora	2620	Newman, Marcy	4136	Nogaj, Luiza	4093
Education	Doheny	Assistant Director	H401	Assistant Professor	A17-A
lmorn@msmc.la.edu		Career Services	Chalon	Biological Sciences	Chalon
		mnewman@msmc.la.edu		lnogaj@msmc.la.edu	
Moulton, Katie	4027	Newsam, Craig	2600	Nunez, Carla	2566
Psychology	Chalon	Lecturer	Bldg 5	Admission Counselor	
		Physical Therapy	Doheny	Admissions	Doheny
				cnunez@msmc.la.edu	
Mullings, Faraah	4121	Ngan, Jenny	2600	O'Brien, George	4281
Director (C)	H110	Instructor		Department Chair	H429
Student	Chalon	Physical Therapy	Doheny	English	Chalon
Programming/Commuter		jngan@msmc.la.edu		gobrien@msmc.la.edu	
Services					
Munoz, Michael	2620	Ngo, Mike	4060	O. I. T./Help Desk, Main	4210/2970
Adjunct Faculty		Lab Tech Bio/Chemistry			DH108
Education	Doheny	Biological Sciences	Chalon	Information Technology	Chalon
mmunoz@msmc.la.edu					

Phone Directory Listing By Alphabetical Order

O.I.T., Fax	4014/2795 DH108/Bldg. 1 Chalon	Orense, Pia	2504 Assistant Director Public Relations Doheny porense@msmc.la.edu	Paura, Catherine	Instructor Office: H311 Film & Social Justice cpaura@msmc.la.edu
Ocampo, Cheryl	4372 Library Office Manager Library Chalon cocampo@msmc.la.edu	Ortega, Adan	2610 General Worker Building 11 Kitchen Doheny Food Services	PC Lab, .	3466 Doheny Campus Chalon Information Technology
Ochoa, Vanessa	4401 Instructor DH108 Sociology Chalon vochoa@msmc.la.edu	Ortiz, Victoria	2723 Nursing (Masters) Doheny vortiz@msmc.la.edu	Pecorelli, Travis	4101 Instructor A-209 Physical Sci. & Mathematics Chalon
Ochoa, Vanessa	4401 iComunidad Director DH108 Title V Undergraduate Chalon vochoa@msmc.la.edu	Ossey, Shamika	2723 Nursing (Masters) Doheny shamosse@msmc.la.edu	Pena, Teresa	4322 Assistant Manager Chalon Bookstore chalonbookstore@msmc.la.edu
Okawa, Elisha	2723 Admin. Assistant Nursing (Masters) Doheny	Ott, Sue	2762 Dir-Development Svcs Bldg 8 Doheny Institutional Advancement	Perea, Gloria	2661 Residence Life Intern Doheny Residence Life
Olmstead, Charles	4158 Adjunct Faculty Psychology Chalon colmstead@msmc.la.edu	Otten, Rebecca	2723 Nursing (Masters) Doheny rotten@msmc.la.edu	Perez, David	4147 Writing Coordinator H-207 Learning Assistance Chalon dperez@msmc.la.edu
Onofre, Roberto	4314 PM SOUS Chef Brady Kitchen Chalon Food Services	Otterbein, Jessica	4257 Assistant Director for Operations H 501 Chalon Admissions	Perez, Edgar	2867 Outreach Coordinator Doheny Weekend College eperez@msmc.la.edu
Ontiveros, Judy	4236 Assistant Professor H305 Nursing (Baccalaureate) Chalon jontiveros@msmc.la.edu	Owens, Robin	2722 Assistant Professor Bldg 2/108C Doheny Religious Studies ROwens@msmc.la.edu	Perez, Maria	2647 Media Services Assistant Bldg1 Doheny Information Technology
Oracle, College Newspaper	4083 H110 Chalon Student Newspaper	Palma, Gerardo	4316 Executive Chef B-kitchen/Bldg 11 Chalon Food Services gpalma@msmc.la.edu	Peters, Shawn	2676 Admission Counselor bldg 10 Doheny Graduate Admission speters@msmc.la.edu
Oracle, College Newspaper	4083 H110 Chalon Student Affairs	Pantoja, Ramiro	2610 Kitchen Supervisor Building 11 Kitchen Doheny Food Services rpantoja@msmc.la.edu	Peterson, Stacey	4252 Associate Professor A 17B Chalon Biological Sciences speterson@msmc.la.edu
Orellana, Jackelin	4253 Admission Counselor Admissions Chalon	Papelian, Haig	4341 Electrician Chalon Facilities Management Chalon hpapelian@msmc.la.edu	Phillips, Jeffrey	4368 Instructor Chalon Sociology jphillips@msmc.la.edu
Orellano, Marta	2586 Housekeeper Bldg 8.5 Doheny Housekeeping morellana@msmc.la.edu	Paradee, Pam	2653 Portal Manager Doheny Library Doheny Information Technology pparadee@msmc.la.edu	Philosophy, Fax	1728 Chalon Philosophy

Phone Directory Listing By Alphabetical Order

Philosophy, Main	4290 H325	Powers, Dave	2600 Bldg #5	Purzycki, Sr. Carol	4070 H412
Philosophy	Chalon	Lecturer	Doheny	Pre Nursing Advisor	Chalon
		Physical Therapy		Academic Advisement	
		dpowers@msmc.la.edu		scpurzycki@msmc.la.edu	
Physical Fitness Information, Hotline	4006	Preciado, Jose	4314	Quadeer, Maimoona	
Hotline	Chalon	General Worker	Brady Kitchen		Bldg 5
		Food Services	Chalon	Nursing (Baccalaureate Acc)	
Pine, Nancy	2613	Preschutti, Mary	2688	Quaye, Dr. Beverly	2723
Director of Bridging Cultures Program		Graduate Assistant		Nursing (Masters)	Doheny
Education	Doheny	Community Engagement & Doheny Career Services	Doheny	bquaye@msmc.la.edu	
Pinto, Angel	4340/4333	President, Fax	4019	Quezada, Christina	4205/2875
Driver	Fac Mgmt	President's Office	Chalon	Individual Giving Coordinator	H300/Bldg 8
Transportation	Chalon			Individual Giving	Chalon
Pocasangre, Wendy	4000	Proescholdt, Jotanna	4311	Quick, James	
Telecommunications Operations Assist.	admin bldg	Director of Auxiliary Services	Brady/Bldg 11	Lecturer	
Technical Communications	Chalon	Food Services	Chalon	Humanities (Masters)	
				jquick@msmc.la.edu	
Pollard, Kimberly	2968	Provost, Fax	4019	Quintana, Elio	2579
User Liaison	Bldg. 1	Provost	Chalon	Maintenance	F Mgmt
Information Technology	Doheny			Facilities Management	Doheny
kpollard@msmc.la.edu				equintana@msmc.la.edu	
Pomerantz, Ben	2656	Pryor, Maureen	4230	Quintanilla, Fatima	2675
Instructor		Adjunct Instructor	H418	Academic Advisor	
Psychology	Doheny	Nursing (Baccalaureate)	Chalon	Academic Advisement	Doheny
bpomerantz@msmc.la.edu				fquintanilla@msmc.la.edu	
Ponce, Luis	2610	Psychology, Fax	4159/2659	Raitt, Alison	
Salad Maker	Bldg 11		H214/Bldg 11	Development Officer	
Food Services	Doheny	Psychology	Chalon	Individual Giving	
Popovich, John	2600	Psychology, Main	4155/2655	Ramirez, Gerardo	4314
Lecturer			H212/Bldg 11	General Worker	Prep Cook
Physical Therapy	Doheny	Psychology	Chalon	Food Services	Chalon
jpopovich@msmc.la.edu					
Portillo, Rosa	2579	Public Relations, Fax	2544	Ramirez, Manuel	2579
Housekeeper	Bldg 8.5		Bldg 8	Gardener	Bldg 8.5
Housekeeping	Doheny	Public Relations	Doheny	Facilities Management	Doheny
rportillo@msmc.la.edu				mr Ramirez@msmc.la.edu	
Portillo, Veronica	2862	Public Relations, Main	2505	Ramirez, Maria	2605
Academic Advisor/ Assistant Director	Bldg2 2nd Floor		Bldg 8	Systems Research Analyst	Bldg 11, 2nd floor
Weekend College	Doheny	Public Relations	Doheny	Inst'l Planning & Research	Doheny
Powell, Bridgette	2562	Purpus, Deanna	4160/2658	Rea, Abigail	4230
Receptionist	745	Assistant		Adjunct Instructor	H424
Student Financing	Doheny	Psychology	Chalon	Nursing (Baccalaureate)	Chalon
bpowell@msmc.la.edu		dpurpus@msmc.la.edu			

Phone Directory Listing By Alphabetical Order

Rea, Abigal	4298	Residence Life, Fax	4329/2669	Rivas, Amy	4110
Instructor	H424		B101	Medical Office Assistant	H1
Nursing (Baccalaureate)	Chalon	Residence Life	Chalon	Health Services	Chalon
area@msmc.la.edu@msmc.la.edu					
Ream, Debbie	2505	Residence Life, Main	4325/2661	Rivas-Hermine, Lisette	4156
Director	Bldg 8 2nd Floor		B-101	Adjunct Professor	
Public Relations	Doheny	Residence Life	Chalon	Psychology	Chalon
dream@msmc.la.edu					
Reed, Claudia	4371/2750	Reyes, Alejandra	2658/4027	Rivera, Perry	
Director	Library	Adjunct Faculty		Technology	
Library	Chalon	Psychology	Doheny	Associate/Assistant for	
creed@msmc.la.edu		areyes@msmc.la.edu		the MBA Weekend	
				Program	
Registrar's, Fax	4029/2519	Reyes, Emilou	4350	Rizk, Houda	2600
	A104	Program Coordinator	Brady	Lecturer	Bldg. 5
Registrar's Office	Chalon	Women's Leadership	Chalon	Physical Therapy	Doheny
		Program		hrizk@msmc.la.edu	
Registrar's, Main	4020/2520	Reyes, Evangeline	4047	Rizo, Roberto	2977
	A104/Bldg 10 #2	Student Accts Mgr.	A109	Cook	Bldg 17
Registrar's Office	Chalon	Business Office	Chalon	Child Development	Doheny
		ereyes@msmc.la.edu		Center	
Regotti, Judy	4230	Reyes, Lucia	2606	Rizo, Valeria	4144
Adjunct Instructor	H418	Clinical Ed. Asst.	Bldg. 5	Program Coordinator	H207
Nursing (Baccalaureate)	Chalon	Physical Therapy	Doheny	Learning Assistance	Chalon
		lreyes@msmc.la.edu		vrizo2@msmc.la.edu	
Reguant, Montserrat	4271	Reynolds, Andrea		Rizo, Valeria	4144
Department Chair	H511	Adjunct Instructor	H 311	Program Coordinator	H207
Language & Culture	Chalon	Philosophy		ISAE	Chalon
mreguant@msmc.la.edu		areynolds@msmc.la.edu		vrizo2@msmc.la.edu	
Reinhart, Ljubica	4043	Reynosa, Linda	4044	Roach, Jim	
Payroll Manager	Admin Bldg	Transportation	Chalon	Lecturer	Bldg 2
Payroll	Chalon			Business Administration	
lreinhart@msmc.la.edu					
Religious Studies, Fax	2649	RHA Store, Chalon	4461	Roback, Nancy	
	Building 2		B119	Instructor	
Religious Studies	Doheny	Residence Life	Chalon	Physical Sci. &	
				Mathematics	
Religious Studies, Main	2640	Rigone, Anne	4152	Robert, Bernadette	4099/2571
	Bldg 2	Instructor		Assistant VP	H200/Bldg 7
Religious Studies	Doheny	Business Administration	Chalon	Student Affairs	Chalon
		arigone@msmc.la.edu		brobert@msmc.la.edu	
Requena, Anthony	4336	Rios, Lizbeth	2977	Robert, Bernadette	4099/2571
Mail & Copy Center	Chalon	Teacher	Bldg 17	Director	H200/Bldg 7
Services		Child Development	Doheny	Student Ambassadors	Chalon
chalonmailroom@msmc.la.edu		Center		brobert@msmc.la.edu	
Residence Desk, Chalon	4324	Rios, Lourdes	4333	Robert, Bernadette	2570
	B101A	Housekeeper	C-Base	Assistant VP	
Residence Life	Chalon	Housekeeping	Chalon	Community Engagement	Doheny
		lrios@msmc.la.edu		brobert@msmc.la.edu	

Phone Directory Listing By Alphabetical Order

Roberts, Lia	4529	Rodriguez, Taimi	4340/4333	Ruckenbrod, Espie	2974
Assistant Professor	H 524	Driver	Fac Mgmt	Datatel User Liaison	Bldg. 1
History/Political Science	Chalon	Transportation	Chalon	Information Technology	Doheny
lroberts@msmc.la.edu		trodriguez@msmc.la.edu		eruckenbrod@msmc.la.edu	
Robinson, Janet	4153	Rojas, Francisco	4314	Ruiz, Haydee	2543
Program Director	H214	Cook	B-Kitchen	Accounts Receivable	building 10
Master of Business Administration Program	Chalon	Food Services	Chalon	Cashier	
				Business Office	Doheny
Robles, Elizabeth	2769	Rojas, Pedro	4314	Ruiz, Jeanne	2512
Director of Alumnae Relations	Bldg 8	Utility Worker	B-Kitchen	Special Assistant to the Vice President of Institutional Advancement	Bldg 8
Alumnae Relations	Doheny	Food Services	Chalon		
Robles, Maria	4333	Rojas, Sebestiana	4333	Ruiz, Juana	2586
Houskeeper	C-Base	Housekeeper	C-Base	Custodian	
Housekeeping	Chalon	Housekeeping	Chalon	Housekeeping	Doheny
Roderick, Danielle		Romero, Amanda		Ruiz, Juanita	2586
Instructor		Instructor		Housekeeper	Bldg 8 1/2
English		Sociology		Housekeeping	Doheny
droderick@msmc.la.edu		aromero@msmc.la.edu			
Rodin, Merrill	2861	Romero, Gloria	2940	Ruiz, Margarita	4313
Dean	Bldg 2	Controller/Budger Director	Bldg 10	Catering Manager	Catering Office
Weekend College	Doheny	Financial Services	Doheny	Food Services	Chalon
mrodin@msmc.la.edu				mr Ruiz@msmc.la.edu	
Rodman, Rosamond	2722	Romo, Raoul	4340	Ryan, Bianc	2666
Lecturer	Bldg 2 Room 108C	Gardener		Lecturer	
Religious Studies	Doheny	Facilities Management	Chalon	English	Doheny
rrodman@msmc.la.edu					
Rodriguez, Carlos	4340	Ronning, Melanie	2620	Sabado, Eugenia	2977
Gardener	Fac Mgmt	Education	Doheny	Asst Director/ Lead Teacher	Bldg 17
Facilities Management	Chalon	Education	Doheny	Child Development Center	Doheny
		mronning@msmc.la.edu			
Rodriguez, Christine	2902	Rouzan-Kay, Renee	4254	Saito, Stephanie	2600
Nursing Counselor	745	Associate Director	H502	Lecturer	Bldg. 5
Admissions	Doheny	Admissions	Chalon	Physical Therapy	Doheny
		rkay@msmc.la.edu		ssaito@msmc.la.edu	
Rodriguez, Leticia	4421	Rowan, Joanna	4236	Salandanan, Francis	4400/2726
Activity Director		Instructor	H430		DH108/IBM Lab
Title III STEM	Chalon	Nursing (Baccalaureate)	Chalon	Information Technology	Chalon
		jrowan@msmc.la.edu		fsalandanan@msmc.la.edu	
Rodriguez, Magdalena		Roy, Casey	2561	Salandanan, Francis	4400/2726
Instructor		Administrative Assistant			DH108/IBM Lab
Sociology		Admissions	Doheny	Technical Communications	Chalon
mrodriguez1@msmc.la.edu					
Rodriguez, Sal	2697	Rubenstein, Lori	2600	Salazar, Maritza	2523
Web Specialist Assistant	Building 745	Lecturer	Bldg 5	Academic Records Specialist	745
Information Technology	Doheny	Physical Therapy	Doheny	Registrar's Office	Doheny
srodriguez@msmc.la.edu		lrubenstein@msmc.la.edu			

Phone Directory Listing By Alphabetical Order

Salem, Susan	4112	Schifrin, Eileen	4027/2657	Shank, Shannon	2907
Director	H-100	Adjunct Instructor		Director of Institutional	Bldg. 1
Counseling & Psych Services	Chalon	Psychology	Chalon	Data Management	
				Information Technology	Doheny
Salgado, Rosemary	2917	Schloss, Ann	2723	Shapiro, Susan	4013
Collections Assoc.	Building 10	Nursing (Masters)	Doheny	Access Serv Librarian	Library
Business Office	Doheny	aschloss@msmc.la.edu		Library	Chalon
rsalgado@msmc.la.edu				sshapiro@msmc.la.edu	
Salvatore, Beryl	4111	Schott, Jennifer		Shealy, Sarah	2582
RN/Director		Adjunct Instructor		Director	Building 5
Health Services	Chalon	Psychology		Nursing (Baccalaureate	Doheny
bsalvatore@msmc.la.edu		jschott@msmc.la.edu		Acc)	
Samuel, Michelle	4158	Schuerger, Mickie	4230	Sherman, Jim	4342/2942
Instructor		Adjunct Instructor	H418	Landscape Manager	F mgnt
Psychology	Chalon	Nursing (Baccalaureate)	Chalon	Facilities Management	Chalon
msamuel@msmc.la.edu				jsherman@msmc.la.edu	
Sanborn, Ruth	4067/2651	Schultz, Adam	2600	Shevyakova, Marina	2919
Lecturer	Hum 5th Floor	Lecturer	Bldg 5	Budget	
Religious Studies	Chalon	Physical Therapy	Doheny	Director/Accounting	
rsanborn@msmc.la.edu		aschultz@msmc.la.edu		Analyst	
Sanchez, Jennifer	2522	Security, Chalon	4123	Financial Services	Doheny
Assistant Registrar	745	Entrance		Shin, Paul	
Registrar's Office	Doheny	Security	Campus Entrance	Lab Assistant	Bldg 5
jsanchez@msmc.la.edu			Chalon	Nursing (Baccalaureate	
Sanders, Malcolm		Security, Circle	4321	Acc)	
Instructor	Office: H310	Security	Circle Guardhouse	Shirley, Deborah	
Film & Social Justice			Chalon	Humanities (Masters)	
msanders@msmc.la.edu				dshirley@msmc.la.edu	
Sandor, Jane		Security, Doheny	2502-2501	Shwartz, Michelle	2621
Instructor		Entrance		Education	Doheny
English		Security	Bldg 2-8	mshwartz@msmc.la.edu	
jsandor@msmc.la.edu			Doheny		
Sandoval, Stephanie	4012	Sedgwick, Mary	4384	Siebert, Eleanor	4015/2949
Office Assistant		Tech.Svcs.Librarian	Library	Provost/Academic VP	A104
President's Office	Chalon	Library	Chalon	Provost	Chalon
		msedgwick@msmc.la.edu		esiebert@msmc.la.edu	
Santner, Susan	4230	Seitz, Marie	4244	Signorovitch, Dennis	4218
Adjunct Instructor	H418	Assistant Director	H425	Instructor	H 214
Nursing (Baccalaureate)	Chalon	Nursing (Baccalaureate)	Chalon	Business Administration	Chalon
		mseitz@msmc.la.edu		dsignorovitch@msmc.la.edu	
Sargent, Barbara	2600	Semple, Elaine		Silver, Samantha	2754/4094
Lecturer		Adjunct Faculty		General Svcs	Library
Physical Therapy	Doheny	Education		Library	Doheny
bsargent@msmc.la.edu		esemple@msmc.la.edu		ssilver@msmc.la.edu	
Sato, Marsha	2980	Senter, Robert	4101	Simon, Marlene	4135
Director		Instructor		Director	H401
Nursing (Masters)	Doheny	Physical Sci. &	Chalon	Career Services	Chalon
msato@msmc.la.edu		Mathematics		msimon@msmc.la.edu	

Phone Directory Listing By Alphabetical Order

Simonelli, Fred Professor History/Political Science fsimonelli@msmc.la.edu		Smith, Renee Instructor Nursing (Associate) rsmith@msmc.la.edu	2630 Bldg. 5 Doheny	Stdnt Financing, Main Student Financing	4190/2562 H328/Bldg 10 Chalon
Sitnisky-Cole, Dr. Carolina Language & Culture csitniskycole@msmc.la.edu		Solano, Maria Manager Institutional Advancement	2536 Bldg8 Doheny	Stemp, Eric Dept. Co-Chair Physical Sci. & Mathematics	4102 A207 Chalon
Skidmore, Lance Associate Professor Physical Sci. & Mathematics	4066 H514 Chalon	Solis, Ericka Program Asst. Sociology	4499 Chalon	Stern, Gabriel Adjunct Instructor Philosophy gstern@msmc.la.edu	H 317
Skinner, Timothy Adjunct Faculty Education tskinner@msmc.la.edu		Sorensen, Karen Instructor Education ksorensen@msmc.la.edu		Stone, Jeanette Assistant Dean Associate in Arts Program	2559 Bldg1 2nd floor Doheny
Skorich, Danielle Resident Music minister Campus Ministry	2672 Doheny	Soto, Rosa Housekeeper Housekeeping	4333 C-Base Chalon	Streeter, Georgianna Philosophy	
Sloan, Dolores Instructor English dsloan@msmc.la.edu	2737 Bldg 4 Doheny	Spikes, Courtney Adjunct Faculty Language & Culture cspikes@msmc.la.edu		Strong, Heather Media Services Assistant Information Technology	4380 Chalon
Smith, Joanne Physical Therapy	2600 Bldg 5 Doheny	Starkey, Michele Dept. Co-Chair Physical Sci. & Mathematics	4103 H515 Chalon	Stuckey, Kristina Assistant to Vice Pres. for Admin. and Finance Administration & Finance	4030 Chalon
Smith, Lacey Dean Baccalaureate Programs lasmith@msmc.la.edu	4017 H410 Chalon	Stdnt Ambssdrs, Fax Student Ambassadors	4139/2699 Brady Patio/Bl.7 Chalon	Stud Act/ Comm Srvc, Fax Student Programming/Commuter Services	4139 Chalon
Smith, Larry VP ISS/EM Title III/V Grants	4018 DH108 Chalon	Stdnt Ambssdrs, Main Student Ambassadors	4106/2572 Brady Patio/Bl.7 Chalon	Stud Prog/Comm Srvc, Main	4120 H110/Bldg 7
Smith, Larry VP ISS/EM Vice Presidents	4018 FAX 4014 DH108 Chalon	Stdnt Employment, Fax Student Employment	4199 Chalon	Student Affairs, Fax Student Affairs	4139/2699 H200/Bldg 7 Chalon
Smith, Larry VP ISS/EM Enrollment Management	4018 FAX 4014 DH108 Chalon	Stdnt Employment, Main Stdnt Employment Student Employment	4195 H328 Chalon	Student Affairs, Main Student Affairs	4130/2570 H200/Bldg 7 Chalon
Smith, Larry VP ISS/EM Information Technology	4018/2727 FAX 4014 DH108 Chalon	Stdnt Financing, Fax Student Financing	4199/2549 H328 Chalon	Student Health, Fax Health Services	4119/2683 H101/Bldg 1 Chalon

Phone Directory Listing By Alphabetical Order

Student Health, Main	4110/2685	Taylor, Diana	2627	Tochluk, Shelly	2623
Health Services	H101/Bldg 1 Chalon	Director of Education Specialist Program Education	Doheny	Department Chair Education	Bldg 20 Doheny
				stochluk@msmc.la.edu	
Sturgeon, Elizabeth	2731	Taylor-Lindheim, Tabitha	1782	Tong, Virginia	2630
Associate Professor	Building 4	Clinical Placement & Contract Coordinator	H425	Instructor	
English	Doheny	Nursing (Baccalaureate)	Chalon	Nursing (Associate)	Doheny
esturgeon@msmc.la.edu				vtong@msmc.la.edu	
Sueki, Derrick	2600	Teays, Wanda	310-954-4290	Tonley, Jason	2600
Lecturer	Bldg # 5	Department Chair	H325	Lecturer	
Physical Therapy	Doheny	Philosophy	Chalon	Physical Therapy	Doheny
sukei@msmc.la.edu		wteays@msmc.la.edu		jtonley@msmc.la.edu	
Sutterley, Peggy	2865	Teglia, Valerie	2602	Torres, Evelyn	2594
Administrative Assistant	Bldg 2	Associate Professor/Director of Clinical Education	Bldg 5	Mail & Copy Center Services	Doheny
Weekend College	Doheny	Physical Therapy	Doheny	dohenymailroom@msmc.la.edu	
psutterley@msmc.la.edu					
Swiatkowski, Chester	4267	Tell, Barbara	4348/2535	Tran Smith, Jennifer	2927
Music	Chalon	Project Mgmt Consultant	Chalon	Lecturer	
cswiatkowski@msmc.la.edu		Facilities Management	Chalon	Humanities (Masters)	Doheny
		btell@msmc.la.edu		jtransmith@msmc.la.edu@msmc.la.edu	
Swiatkowski, Hak Soon		Terrill, Kimberly	2662	Transportation, Main	4340/4333
Music		Director of Community Engagement and Doheny Career Services	Bldg 11, 2nd floor	Transportation	Chalon
HSwiatkowski@msmc.la.edu					
Swimming Pool, The	5799/3310	Thelander, Bev		Trautwein, Paul	4092
Fitness Education	Chalon	Instructor		Web Specialist	DH 215
		Master of Business Administration Program		Information Technology	Chalon
				ptrautwein@msmc.la.edu	
Taheri, Moosh	4228	Thompson-Halsey, Sonya	4218	Travis, Greg	2654
Lecturer	H323	Instructor		Director of Graduate Psychology	
Philosophy	Chalon	Psychology	Chalon	Psychology	Doheny
mtaheri@msmc.la.edu					
Tamayo, Joey	4320/2556	Thrall, Natasha	2644	Tregenza, Birgit	
Account Manager	Brady/Bldg10.5	Administrative Assistant		Instructor	
Mail & Copy Center Services	Chalon	Business Administration	Doheny	Philosophy	
		nthrall@msmc.la.edu		btregenza@msmc.la.edu	
Tan, Peter	2926	Thrall, Natasha	2655	Trejos, Marcela	4340
Lecturer	H323 / Bldg. 2	Administrative Assistant		Admin Asst	F Mgnt
Philosophy	Doheny	Psychology	Doheny	Facilities Management	Chalon
ptan@msmc.la.edu				mtrejos@msmc.la.edu	
Tang, Julia	4156	Thwaites, Kelby	x4305	Trujillo, Gustavo	2610
Adjunct Instructor	H216	Instructor	Office: H312	SOUS Chef	Bldg 11
Psychology	Chalon	Film & Social Justice	Chalon	Food Services	Doheny
		kthwaites@msmc.la.edu		gtrujillo@msmc.la.edu	
Tate, Cathy	2657	Tino-Sandoval, Cindy		Tsai, Jackson	2600
Psychology	Doheny	English		Lecturer	Bldg. 5
		csandoval@msmc.la.edu		Physical Therapy	Doheny
				jtsai@msmc.la.edu	

Phone Directory Listing By Alphabetical Order

Tucker, Kim Instructor Art ktucker@msmc.la.edu		Vasquez, Onofre 2579 Maintenance Worker Bldg 8.5 Facilities Management Doheny ovasquez@msmc.la.edu	Wagner, Amy 2981 Physical Therapy Doheny awagner@msmc.la.edu
Tumbarello, Anne 4279 Director H 419 Nursing (Baccalaureate) Chalon atumbarello@msmc.la.edu		Vaughan, Sr., Kieran 2628 Professor Bldg. 17 Liberal Studies Doheny kvaughan@msmc.la.edu	Walker, Christopher Music chriwalk@msmc.la.edu
Turner, Chris Adjunct Faculty Bldg. 2 Business Administration cturner@msmc.la.edu		Vecera, Julie Anne 4230 Adjunct Instructor H418 Nursing (Baccalaureate) Chalon	Walker, Shenetra 4230 Adjunct Instructor H418 Nursing (Baccalaureate) Chalon
Tuttle, Sarah 4125/2672 Intern Campus Ministry Chalon		Velasquez, Cynthia 2632 Coordinator Bldg 10 1/2 Campus Events Doheny cvelasquez@msmc.la.edu	Walla, Tom 2735 Instructor English Doheny twalla@msmc.la.edu
Tysszkiewicz, Katy Instructor English ktysszkiewicz@msmc.la.edu		Verceles, Jill 2620 Secretary Bldg 20 Education Doheny jverceles@msmc.la.edu	Warfield, Karen 2761 Dir-Special Events Institutional Doheny Advancement
Ulloa, Annette 2916 Accts Payable Business Office Doheny		Villa, Lisa 4138 Counselor H207 ISAE Chalon lvilla@msmc.la.edu	Waters, Frank Instructor Philosophy fwaters@msmc.la.edu
Unt, Ellen 4345 Instructor Fitness Education Chalon ejunt@msmc.la.edu		Villanueva, Marina 1732 Application Processor Admissions Chalon	Watkins, Keith 4333 Housekeeping Facilities Management Chalon
Valdez, Jo 4035 HR Assistant DH109 Human Resources Chalon jvaldez@msmc.la.edu		Villasenor, Juan 4314/2610 Supervisor B-kitchen/ Bldg 11 Food Services Chalon jvillasenor@msmc.la.edu	Watson, Dionna 2764 Special Events Assistant Bldg8 Institutional Doheny Advancement
VanDyke, Dan Lecturer Doheny Religious Studies dvandyke@msmc.la.edu		Villegas, Lucille 4010 Assistant to the President A101 President's Office Chalon lvillegas@msmc.la.edu	Webb, Derek 4322 Manager Bookstore Chalon chalonbookstore@msmc.la.edu
VanMeter, Justine Lecturer Humanities (Masters) jvanmeter@msmc.la.edu		Vogel, Casey 2600 Lecturer Physical Therapy Doheny cvogel@msmc.la.edu	Wechsler, Elizabeth 4308 Instructor Nursing (Baccalaureate) Chalon ewechsler@msmc.la.edu
Vasquez, Andrea 4064 Lab Assistant A-13 Biological Sciences Chalon avasquez@msmc.la.edu		Vu, Cam 2600 Bldg 5 Physical Therapy Doheny	Weekend College, Fax 2869 Weekend College Doheny
Vasquez, Isela 4333 Supervisor Facilities Management Chalon		Wadsworth, Mari 4133/2570 Associate VP Student Affairs Chalon mwadsworth@msmc.la.edu	Weekend College, Main 2866 Bldg 2 Weekend College Doheny

Phone Directory Listing By Alphabetical Order

Weiner, Elizabeth	2620	Williams, Patricia	4044	Yee, Curtis	4151
Education	Doheny	Manager	Chalon	Psychology	Chalon
eweiner@msmc.la.edu		Facilities Management	Chalon		
		pwilliams@msmc.la.edu			
Wells, Matt	310-709-9704	Williamson, Teresa	4079	Yokoyama, James	4070/2577
Projects Manager		Instructor	H515	Academic Advisor	
Facilities Management	Chalon	Physical Sci. & Mathematics	Chalon	Academic Advisement	Chalon
mwells@msmc.la.edu					
Wexler, Toni	2685	Windmueller, Michelle	2620	Yoon, Hea Lan	2723
RN / Student Health Coordinator		Education	Doheny	Nursing (Masters)	Doheny
Health Services	Doheny	mwindmueller@msmc.la.edu		hyoon@msmc.la.edu	
Whalen, Ellen	2723	Winter, Norman	2581	Young, Elizabeth	4230
Nursing (Masters)	Doheny	Assistant Director		TBSN Coordinator	H419
ewhalen@msmc.la.edu		Student Financing	Doheny	Nursing (Baccalaureate)	Chalon
				eyoung@msmc.la.edu	
Wheeler, Lynn	4110/2685	Winterbauer, Neil	4104/2658	Yue, Jennifer	2600
Family Nurse Practitioner	H103 Bldg5	Instructor			Bldg 5
Health Services	Chalon	Psychology	Chalon	Physical Therapy	Doheny
		nwinterbauer@msmc.la.edu			
Whitehead, Tanesha	2985	Wise, Janet	2854	Zaballero, Alice (Maria Alicia)	4332
Program Coordinator	Bldg5 2nd floor	Clinical Placement Director	Bld5 C114A	Payroll Associate	Admin Bldg
Nursing (Baccalaureate Acc)	Doheny	Nursing	Doheny	Payroll	Chalon
Whitley, Leeval	2538	Wood, Jaime	4145	Zaferes, Peter	2864
Database Coordinator	Bldg8	Director	H401	Academic Advisor/ Assistant Director	Bldg 2
Institutional Advancement	Doheny	Academic Advisement	Chalon	Weekend College	Doheny
Whitman, Katherine	4152/ 2689 WEC	Wright Garry, Laurie	4067/2717	Zambrano, Eduardo	4340/4333
Associate Professor	H215	Associate Professor	Chalon: H5 PR1/Doheny: #2-106D	Driver	Fac Mgmt
Business Administration	Chalon	Religious Studies	Chalon	Transportation	Chalon
kwhitman@msmc.la.edu				ezambrano@msmc.la.edu	
Wickware, Sherry	2537	Yakas, Gabriela	4110	Zambrano, Nery	2586
Director of Individual Giving	Bldg8	RN / Student Health Coordinator	H1st	Housekeeper	Bldg 8.5
Institutional Advancement	Doheny	Health Services	Chalon	Housekeeping	Doheny
				nzambrano@msmc.la.edu	
Wickware, Sherry	2537	Yang, Angela		Zapata, Summer	4114/4115
Director of Individual Giving	Bldg8	Lab Assistant	Bldh 5	Doctoral Intern	H 101
Individual Giving	Doheny	Nursing (Baccalaureate Acc)		Counseling & Psych Services	Chalon
Wigwam, .	3323	Yang, Jaemin	2723	Zavala, Val	
	Doheny Campus	Nursing (Masters)	Doheny	Instructor	Office: H311
Residence Life	Chalon	jyang@msmc.la.edu		Film & Social Justice	
				vzavala@msmc.la.edu	
Wilcoxon, Anne	2622	Yang, Julie	2600	Zembrano, Jaime	4333/2586
Professor	Bldg 20	Instructor	Bldg 5	Custodian	
Education	Doheny	Physical Therapy	Doheny	Housekeeping	Chalon
awilcoxon@msmc.la.edu		jyang2@msmc.la.edu			

Phone Directory Listing By Alphabetical Order

Zepeda, Dalia 4190/2562
Counselor H317/Bldg 10
Student Financing Chalon
dzepeda@msmc.la.edu

Ziperstein, Bari 4361
Instructor DH 213
Art Chalon
bziperstein@msmc.la.edu

Zonfrillo, Fran 4230
Comm Hlth II H422
Nursing (Baccalaureate) Chalon